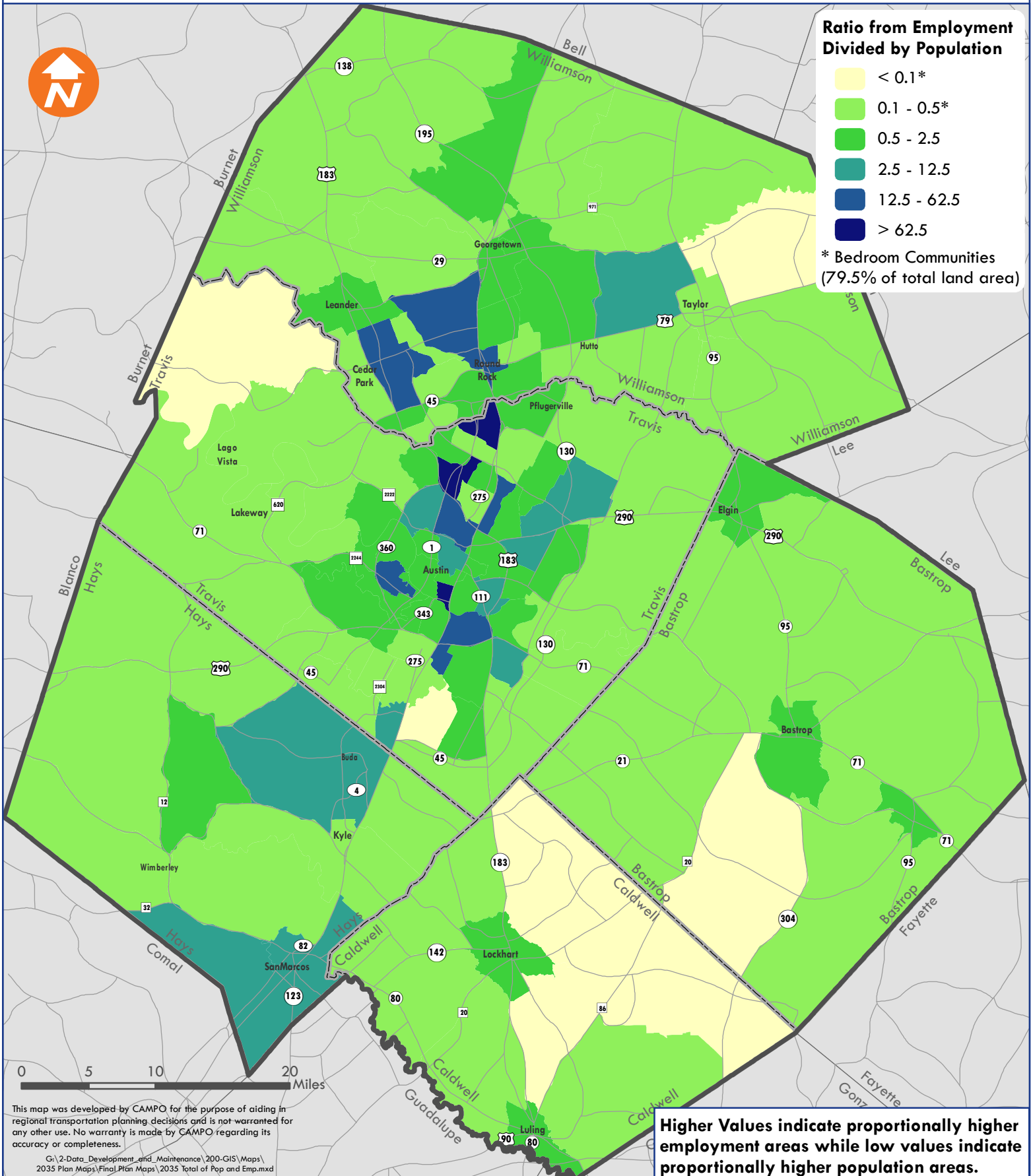




Ratio from Employment Divided by Population

- < 0.1*
- 0.1 - 0.5*
- 0.5 - 2.5
- 2.5 - 12.5
- 12.5 - 62.5
- > 62.5

* Bedroom Communities (79.5% of total land area)



This map was developed by CAMPO for the purpose of aiding in regional transportation planning decisions and is not warranted for any other use. No warranty is made by CAMPO regarding its accuracy or completeness.

G:\2-Data_Development_and_Maintenance\200-GIS\Maps\2035 Plan Maps\Final\Plan Maps\2035 Total of Pop and Emp.mxd

Higher Values indicate proportionally higher employment areas while low values indicate proportionally higher population areas.