



Active Transportation Working Group Agenda *Meeting Summary*

505 Barton Springs Road, Suite 700, Austin, TX 78704
January 10, 2012 at 1:30 p.m.

Please visit the CAMPO website for summaries of past meetings:
http://campotexas.org/programs_bicped.php

Attendees:

David Bartels	City of Round Rock (via teleconference)
Sam Cortez	University of Texas Parking & Transportation
Pete Dahlberg	City of Austin Public Works Dept.
Eric Dusza	City of Austin Public Works Dept.
Greg Griffin, AICP	CAMPO
Jolinda Marshall, AICP	Capital Metro
James Massaro, PE	City of San Marcos
Charles Riou, PE	Texas Department of Transportation Trans. Planning & Programming
Jeremy Siltala	Texas State University student
Preston Tyree	Austin Cycling Association
Tom Wald	League of Bicycling Voters
Charlie Watts, AICP	Travis County TNR

DISCUSSION

1. Draft Regional Bicycle Map update

Pete Dahlberg with the City of Austin has drafted a revised Regional Bike Map for review through February 14th. Preston Tyree offered help guiding input from the Austin Cycling Association. Tom Wald recommended considering a hillshade background that could help identify steep routes. CAMPO updated the website to include the new draft, and retained the comment form for receiving input.

Tom Wald with the League of Bicycling Voters to discussed potential uses of the map and data for planning, such as the Travis County bicycle priority planning currently underway. This map could be used by jurisdictions to have the most current info on existing conditions. The CAMPO 2035 Priority Bicycle Corridor Map uses this input with potential demand and public involvement.

2. 2011 walking and bicycling counts and planning counts for 2012

G. Griffin reviewed recent counts on the Lance Armstrong Bikeway and 183-A shared-use path. A graph and table are attached to this summary of this data. Preston Tyree asked why more bicyclists travel east than west on the bikeway at that location, and the group



offered several ideas, including the parallel Fourth Street's automobile one-way east routing at that section.

At least 10 Spring 2012 counts planned in April and May; At least 5 Fall 2012 counts planned in September. The City of Austin has not yet confirmed a specific plan or 2012 schedule for counts, but accomplished many in 2011.

3. 2012 schedule

The following schedule was planned for ATWG meetings in 2012: January 10, April 10, June 12, August 14, November 13. Meetings will continue to be held at 1:30 pm at CAMPO, and teleconference options will continue to be provided for those who request.

4. Other issues

Jolinda Marshall mentioned that Capital Metro's online survey is closing January 15th, and will provide some useful information on improving transit and bicycle transportation. In addition, the Kramer MetroRail station will have the agency's first bicycle cage, which could become operational in May. Bicycle cages are planned for other stations using grant funding.

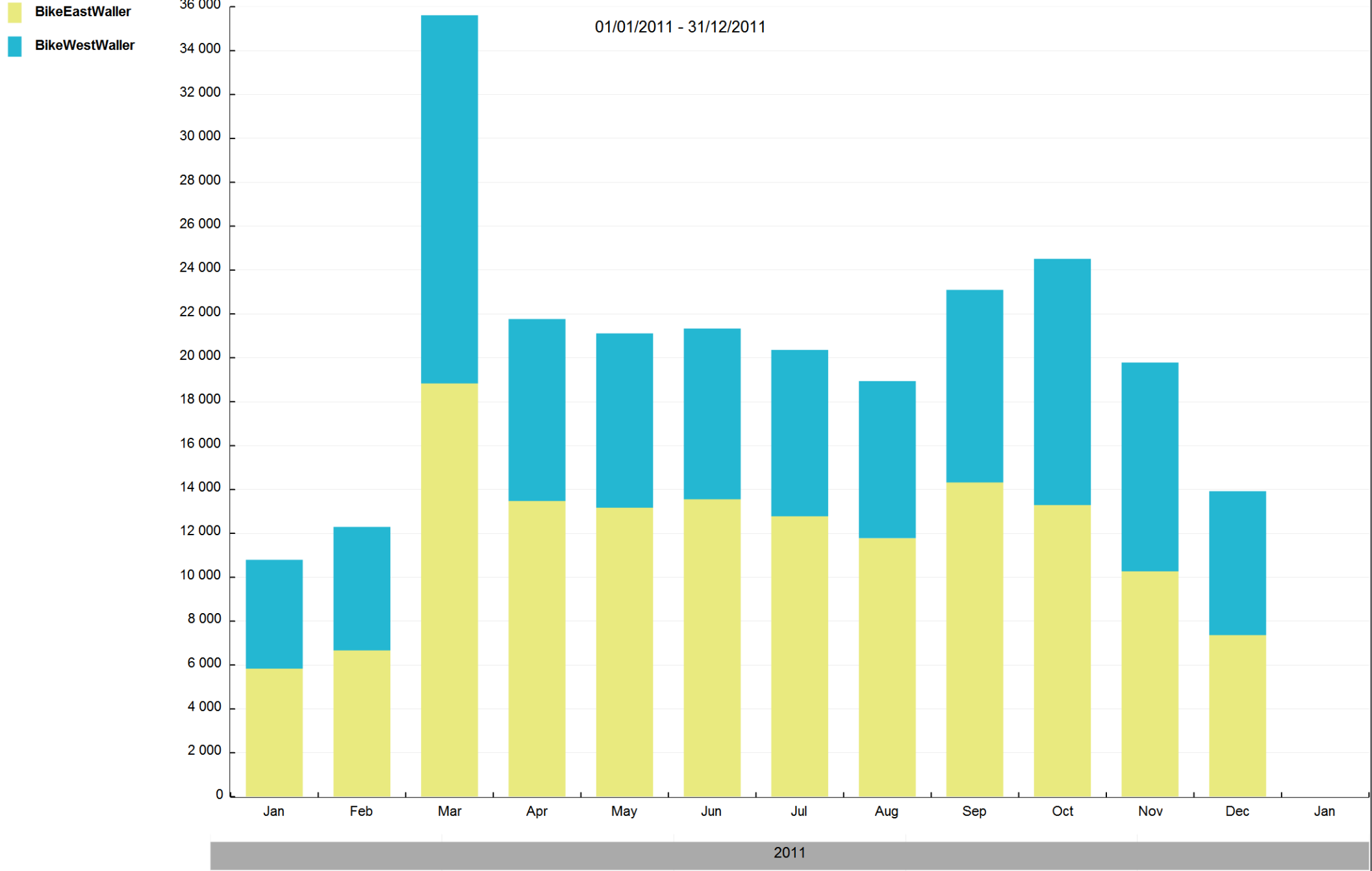
INFORMATION/DISCUSSION

- Texas Trails and Active Transportation Conference is February 1-2, 2012 in San Antonio. Keynote speakers include former congressman James Oberstar, Danish architect and urban design consultant Jan Gehl, and John Burke, President of Trek Bicycles. Registration and info at <http://texastrails.biketexas.org/>.
- Commuter Solutions includes links to seven different bicycle routing maps in the region, most of which have been recently updated: <http://www.commutersolutions.com/commuter-resources/biking-walking/>.

Participation in the CAMPO Active Transportation Working Group is open to all. Contact Greg Griffin, AICP at (512) 974-2084 for more information.

Lance Armstrong Bikeway Bicyclist Counts at Waller Creek Bridge, 2011

01/01/2011 - 31/12/2011



NATIONAL BICYCLE AND PEDESTRIAN DOCUMENTATION PROGRAM																				
BACKGROUND DATA SHEET																				
Agency/Organization:	Capital Area Metropolitan Planning Organization																			
ID #:																				
Date sheet completed:	10-Dec-12																			
Contact Information:																				
Lead Person Name	Greg Griffin, AICP																			
Address	P.O. Box 1088, Austin, TX 78767-1088																			
E-mail	greg.griffin@campotexas.org																			
Phone	(512) 974-2084																			
Count Location Description:																				
Type of facility:	4-lane arterial street with sidewalks	Shared-use path, concrete	arterial with bike lanes and sidewalk	2 parallel concrete paths	crosswalk & shared-use path	MAU-2 w/sidewalks & wide curb lanes	MNR-2 w/sidewalks	MAD-4	MAD-4 w/bike lanes & sidewalks	Shared-use path, concrete	wide sidewalk	MAU-4 w/sidewalks	MNR-2 w/sidewalks	MAU-4 w/bike lanes & sidewalks	MNR-2 w/bike lanes & 1 sidewalk	Shared-use path, concrete	Shared-use path, concrete	Shared-use path, concrete	Shared-use path, concrete	
Type of setting:	urban, small city	urban parkland	university	university	urban, small city	urban, small city	urban, large city	urban, large city	urban, large city	urban parkland	urban, large city	urban, large city	suburban	suburban	urban	suburban	suburban	suburban	suburban	
Scenic Quality:	high	medium	medium	high	high	medium	medium	medium	medium	medium	medium	medium	med	med	high	high	high	high	high	
Surrounding land uses:	university, park	commercial, park, residential	university, museum	university, museum	university, park	university, commercial, residential	commercial, residential	commercial, residential	commercial, residential	commercial, park	commercial, residential	residential, commercial	residential	residential	residential	residential	parkland			
Schools, parks, visitor destinations within 1/4 mile:	Texas State University-San Marcos, Aquarena Center, City of San Marcos park	Lady Bird Lake, Mellow Johnny's Bike Shop	University of Texas, state employment offices	University of Texas, state employment offices	Texas State University-San Marcos, Aquarena Center, City of San Marcos park	Texas State University-San Marcos, Aquarena Center, City of San Marcos park	Oak Springs Elem, Zaragosa Park, Rosewood Park, Pan American Park, Metz Elementary School, Huston-Tillotson University	Southpark Meadows Shopping Center	Mueller Greenway, Bartholomew District Park, Wesley School	Austin Convention Center, MetroRail Downtown Station, Lady Bird Lake, Sanchez Elementary	Lady Bird Lake, Whole Foods headquarters	Lady Bird Lake, Palmer Events Center, Butler Park, Texas School for the Deaf	Austin Community College, Pinnacle Campus	Austin Community College, Pinnacle Campus	O Henry Middle School, Austin Municipal Golf Course, West Enfield Park	Family YMCA, Cox Elementary, Hilltop Baptist Church, Rutledge				
Quality of connecting facilities:	low	high	high	high	low	low	high	high	high	high	high	medium	medium	medium	high	medium				
Length of facility:		> 1 mile		400 feet	.5 mile	1 mile	> 1 mile	> 1 mile	> 1 mile	> 1 mile	> 1 mile	> 1 mile	> 1 mile	> 1 mile	> 1 mile	> 1 mile				
Access:		high	high	high	high	medium	high	high	high	high	high	medium	medium	medium	high	medium				
Quality of overall network:	low	high	medium	medium	low	low	high	high	high	high	high	medium	medium	medium	medium	medium				
Traffic volumes (ADT):	33,000	n/a	unknown	-	20,000	11,981	10,000	9,000	19,000	n/a	41,342	24,000	7,000	8,000	9000	n/a				
Traffic speeds (posted):	35 mph	n/a	15 mph	-	30 mph	30 mph	30 mph	45 mph	40 mph	n/a	35 mph	35 mph	30 mph	40 mph	35 mph	n/a				
Crossings and intersections:	2, 3-way intersections within 1/4 mile	intersecting path <100 feet	every ~600 feet	intersecting road <100 feet	2, 3-way intersections within 1/4 mile	1, with commercial driveway access	3 within 1000'	2 within 1000'	3 within 1000'	13 within 1000'	8 within 1000'	4 within 1000'	6 within 1000'	7 within 1000'	6 within 1000'					
Crossings and intersection traffic:	low	n/a	high	-	medium	medium	medium	medium	medium	n/a	high	high	low	low	low	n/a				
Crossings and intersection protection:	none	n/a	low	-	crosswalk w/ped signal	crosswalk w/ped signal	crosswalk w/ped signal	crosswalk w/ped signal	crosswalk w/ped signal	n/a	crosswalk w/ped signal	crosswalk w/ped signal	crosswalk w/ped signal	crosswalk w/ped signal	crosswalk w/ped signal	n/a				
Topography:	gentle	gentle	gentle	gentle	gentle	steep	gentle	gentle	gentle	gentle	moderate	moderate	gentle	gentle	gentle	moderate				
Count #1 Data:																				
Date Collected:	03/03/11	04/01/11	03/29/11	03/29/11	09/14/11	09/14/11	09/13/11	09/13/11	09/13/11	03/31/11	04/27/11	03/22/11	04/11/11	04/21/11	04/19/11	12/13/11	12/12/11	12/01/11	12/01/11	
Time Period:	7:45 am - 9:45 am	12:15pm-1:15pm	24-hour	24-hour	3:35-5:35pm	8:30-10:30am	7:15-9:15am	3:45-5:45pm	8-9:30 am	24-hour	24-hour	24-hour	24-hour	24-hour	24-hour	24-hour	24-hour	24-hour	24-hour	
Weather:	45F, cloudy	80F, cloudy	warm and dry	warm and dry	clear, 98F	clear, 80F	clear, 74F	clear, 104F	clear, 80F	warm and dry	warm and dry	warm and dry	warm and dry	warm and dry	warm and dry	cool, light rain	cool, light rain	cool, light rain	cool, light rain	
Bicycles:	30	59	1497	159	35	42	13	3	23	671	359	97	9	37	110	30	1	2	5	
Pedestrians:	417	46	not counted	not counted	348	759	15	6	27	365	719	not counted	not counted	not counted	not counted	36	0	26	247	
Other:	2 (skateboarders)	not counted	not counted	not counted	0	0	0	0	0	not counted	not counted	not counted	not counted	not counted	not counted					
Count #2 Data:																				
Date Collected:		09/14/11	03/30/11	03/30/11						09/14/11						12/16/11	12/16/11	12/06/11	12/06/11	
Time Period:		24-hour	24-hour	24-hour						24-hour						24-hour	24-hour	24-hour	24-hour	
Weather:		hot and dry	warm and dry	warm and dry						hot and dry						cool, dry	cool, dry	cool, dry	cool, dry	
Bicycles:			733	1628	193					645						24	1	0	0	
Pedestrians:		409	not counted	not counted						414						141	1	6	11	
Other:				not counted						not counted										
Count #3 Data:																				
Date Collected:																12/18/11	12/18/11	12/09/11	12/09/11	
Time Period:																24-hour	24-hour	24-hour	24-hour	
Weather:																cool, dry	cool, dry	cool, dry	cool, dry	
Bicycles:																205	18	7	7	
Pedestrians:																307	6	34	22	
Other:																				
Count #4 Data:																				
Date Collected:																12/21/11	12/21/11	12/13/11	12/13/11	
Time Period:																24-hour	24-hour	24-hour	24-hour	
Weather:																cool, rainy	cool, rainy	cool, drizzle	cool, drizzle	
Bicycles:																53	5	0	0	
Pedestrians:																167	5	2	4	