

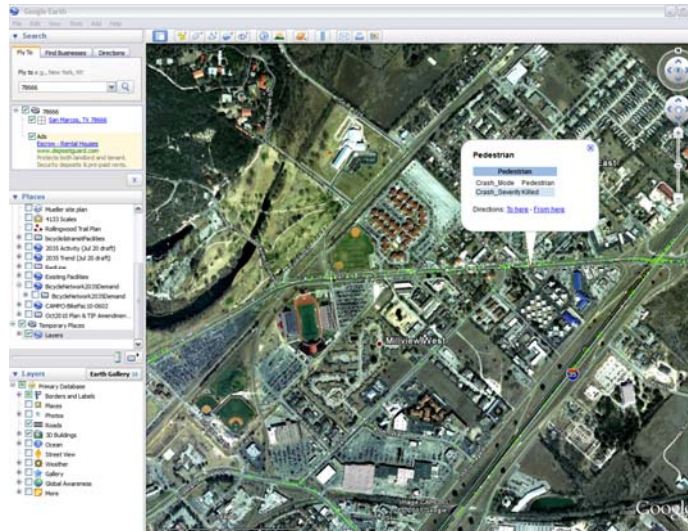


CAMPO Combined Project Call – Instructions

Using GIS and Google Earth Files

Several of the questions on the CAMPO Call for Projects application require detailed information from CAMPO maps or the data files used to make them. For jurisdictions with geographic information systems (GIS) staff, the information is packaged in an [ArcGIS Geodatabase](#) linked on the [Call for Projects website](#). Others without access to GIS software may prefer to use Google Earth, a free software that allows viewing of complex datasets. Following are basic instructions for using Google Earth for the CAMPO Call for Projects. Tutorials are provided by Google if needed, and are available at this address: <http://earth.google.com/outreach/tutorials.html>.

1. Download and install Google Earth 6 from <http://www.google.com/earth/index.html>.
2. Download and extract the Google Earth Data Zipped file from the Call for Projects website: <http://www.campotexas.org/stpmm.php>
3. Click on any of the extracted files ending in .kmz, and it should automatically start up Google Earth with the layer visible.
4. Navigate the Google Earth window using a mouse or keyboard controls to locate your anticipated project area, and click on the data to find needed attributes.
5. Perform any calculations or estimates needed as called for in the application.



If you have trouble accessing the data you need, please contact Greg Griffin, greg.griffin@campotexas.org, 512-974-2275.