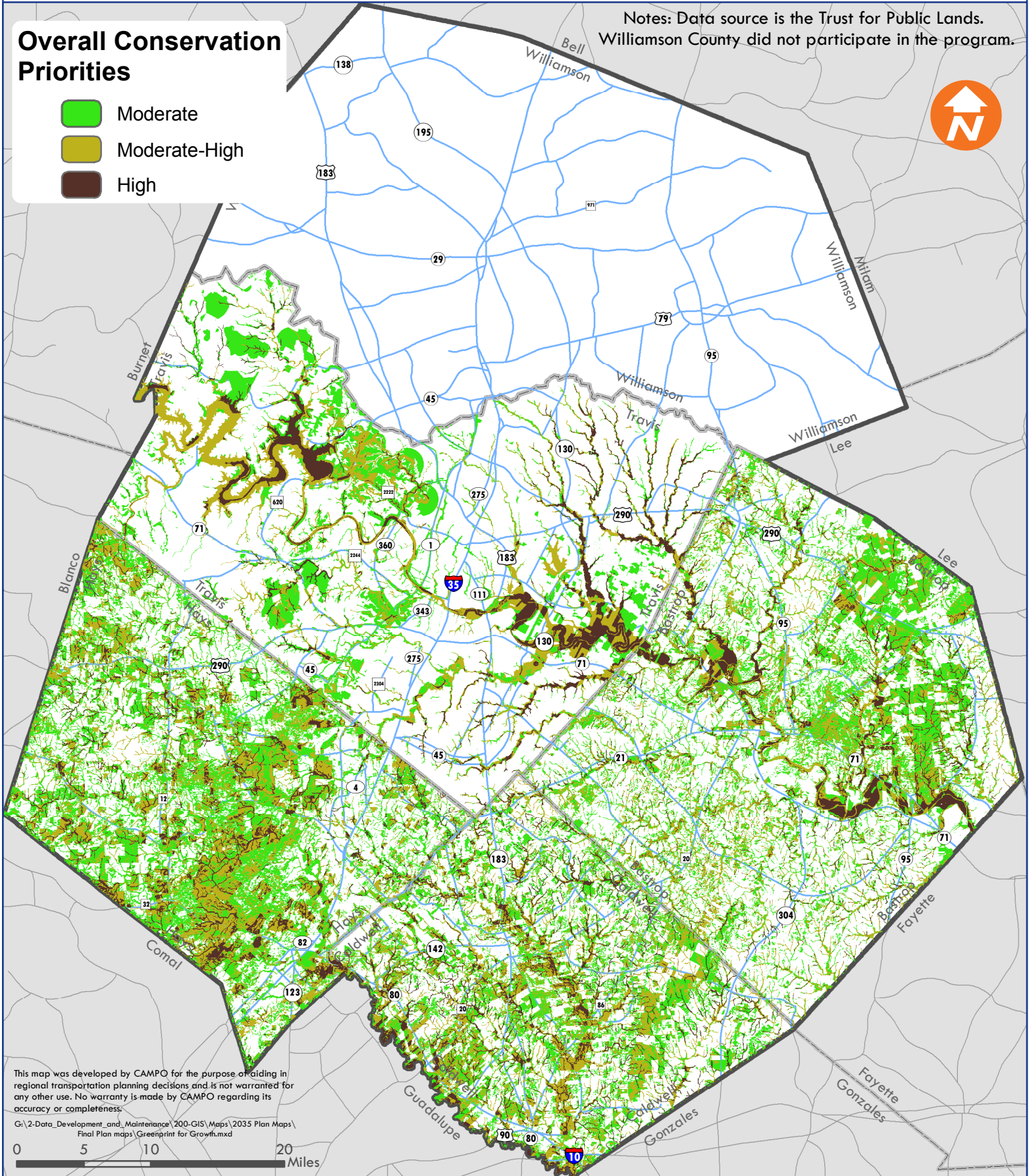


### Overall Conservation Priorities

- Moderate
- Moderate-High
- High

Notes: Data source is the Trust for Public Lands. Williamson County did not participate in the program.



This map was developed by CAMPO for the purpose of aiding in regional transportation planning decisions and is not warranted for any other use. No warranty is made by CAMPO regarding its accuracy or completeness.

G:\2-Data\_Development\_and\_Maintenance\200-GIS\Maps\2035 Plan Maps\Final Plan maps\Greenprint for Growth.mxd