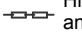








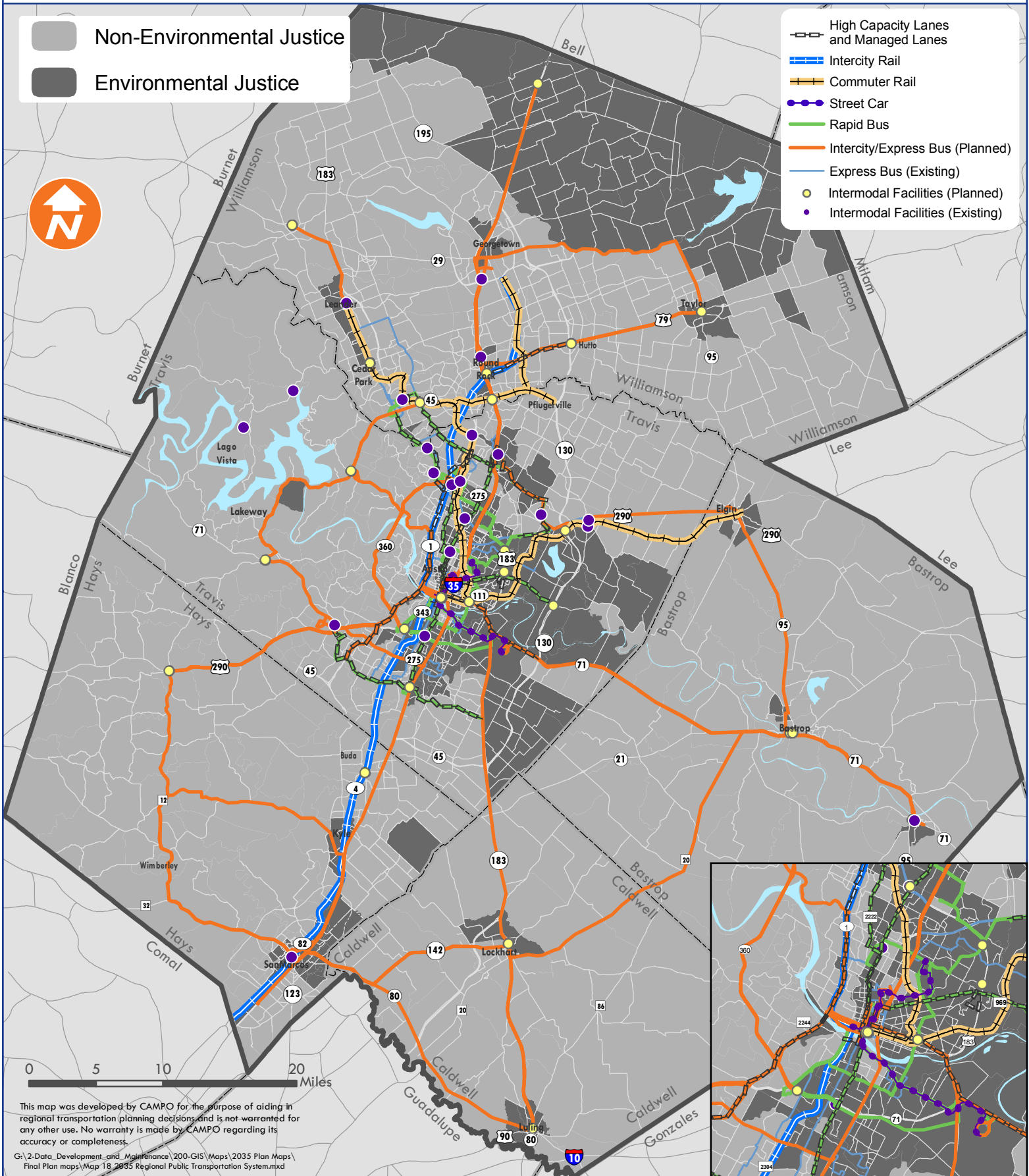


- Non-Environmental Justice
- Environmental Justice

-  High Capacity Lanes and Managed Lanes
-  Intercity Rail
-  Commuter Rail
-  Street Car
-  Rapid Bus
-  Intercity/Express Bus (Planned)
-  Express Bus (Existing)
-  Intermodal Facilities (Planned)
-  Intermodal Facilities (Existing)



0 5 10 20 Miles

This map was developed by CAMPO for the purpose of aiding in regional transportation planning decisions and is not warranted for any other use. No warranty is made by CAMPO regarding its accuracy or completeness.

G:\2-Data_Development_and_Maintenance\200-GIS\Maps\2035 Plan Maps\Final Plan maps\Map 18_2035 Regional Public Transportation System.mxd