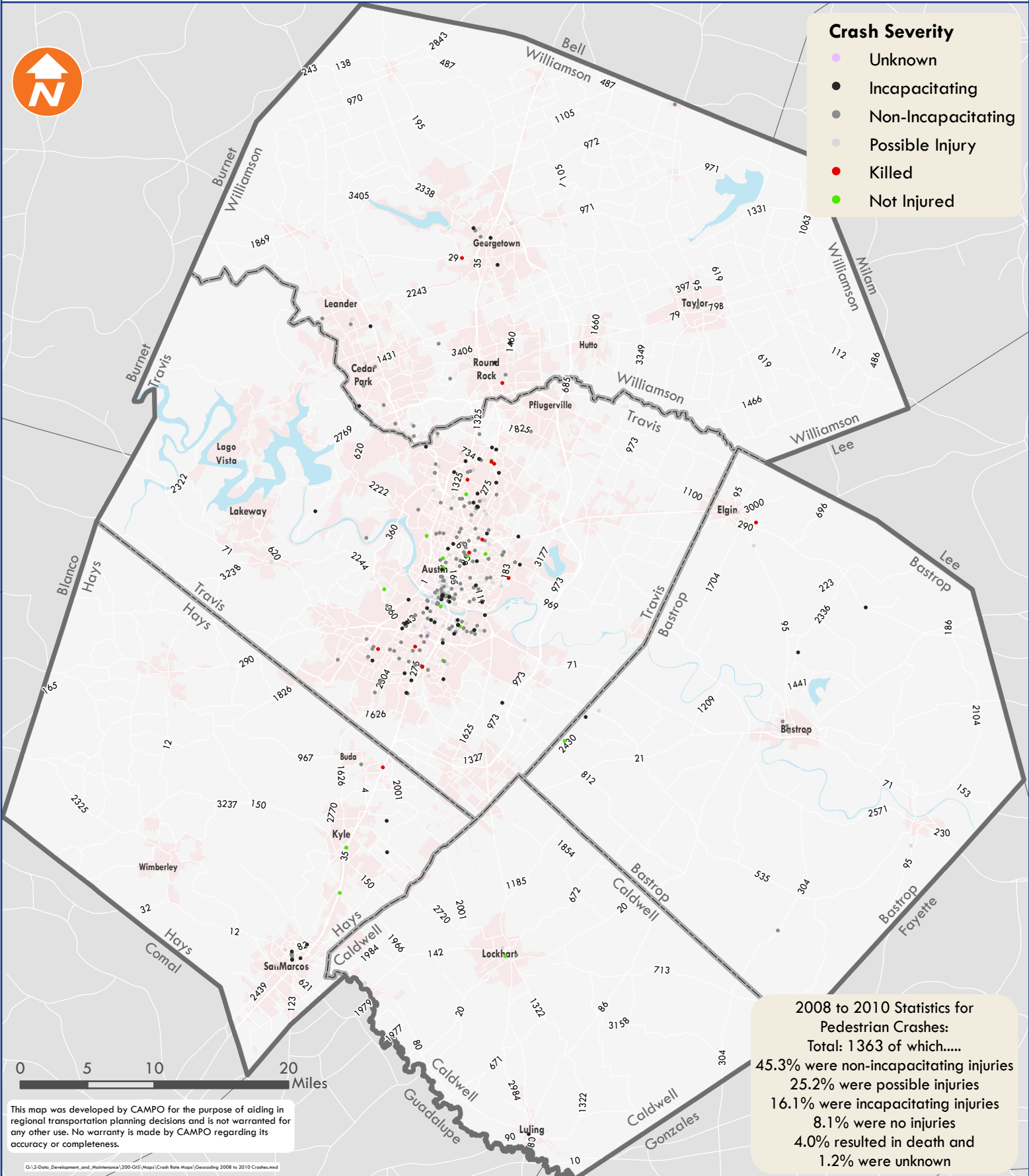




Crash Severity

- Unknown
- Incapacitating
- Non-Incapacitating
- Possible Injury
- Killed
- Not Injured



2008 to 2010 Statistics for Pedestrian Crashes:
 Total: 1363 of which.....
 45.3% were non-incapacitating injuries
 25.2% were possible injuries
 16.1% were incapacitating injuries
 8.1% were no injuries
 4.0% resulted in death and
 1.2% were unknown

This map was developed by CAMPO for the purpose of aiding in regional transportation planning decisions and is not warranted for any other use. No warranty is made by CAMPO regarding its accuracy or completeness.

G:\2-Data_Development_and_Maintenance\200-GIS\Maps\Crash Rate Maps\Geocoding 2008 to 2010 Crashes.mxd