

WHAT IS THE LULING TRANSPORTATION STUDY?

Created to address increased traffic congestion in the downtown area, the Luling Transportation Study has assessed current and future transportation needs within Luling, including the potential viability of a relief route. This study incorporates public feedback as well as all existing plans, ordinances, and environmental conditions in the potential near and long-term improvement recommendations. This study is a partnership with the City of Luling, Caldwell County, TxDOT, and CAMPO.

The recommendations outlined are preliminary and will require funding, additional study, and public involvement to move forward.

STUDY GOALS

Identify
needed safety
improvements

Enhance mobility in
downtown for local
and through traffic

Evaluate feasibility of
an alternate route for
through traffic

Incorporate tools to
promote the unique
character of downtown
and economic
development
opportunities

PROCESS

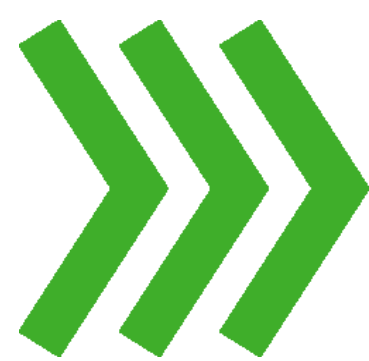
DISCOVER

FALL 2018 -
WINTER 2019

Gather community input
and technical information
on existing conditions, such
as traffic and safety data



Public Comment Period



EVALUATE

WINTER 2019 -
SPRING 2019

Continue to use community
input and technical data
to develop potential
improvements that address
local needs



Public Comment Period



REPORT

SUMMER 2019

Use feedback collected
on potential improvement
options to finalize and
report to City Council,
Commissioners Court, and
CAMPO Policy Board

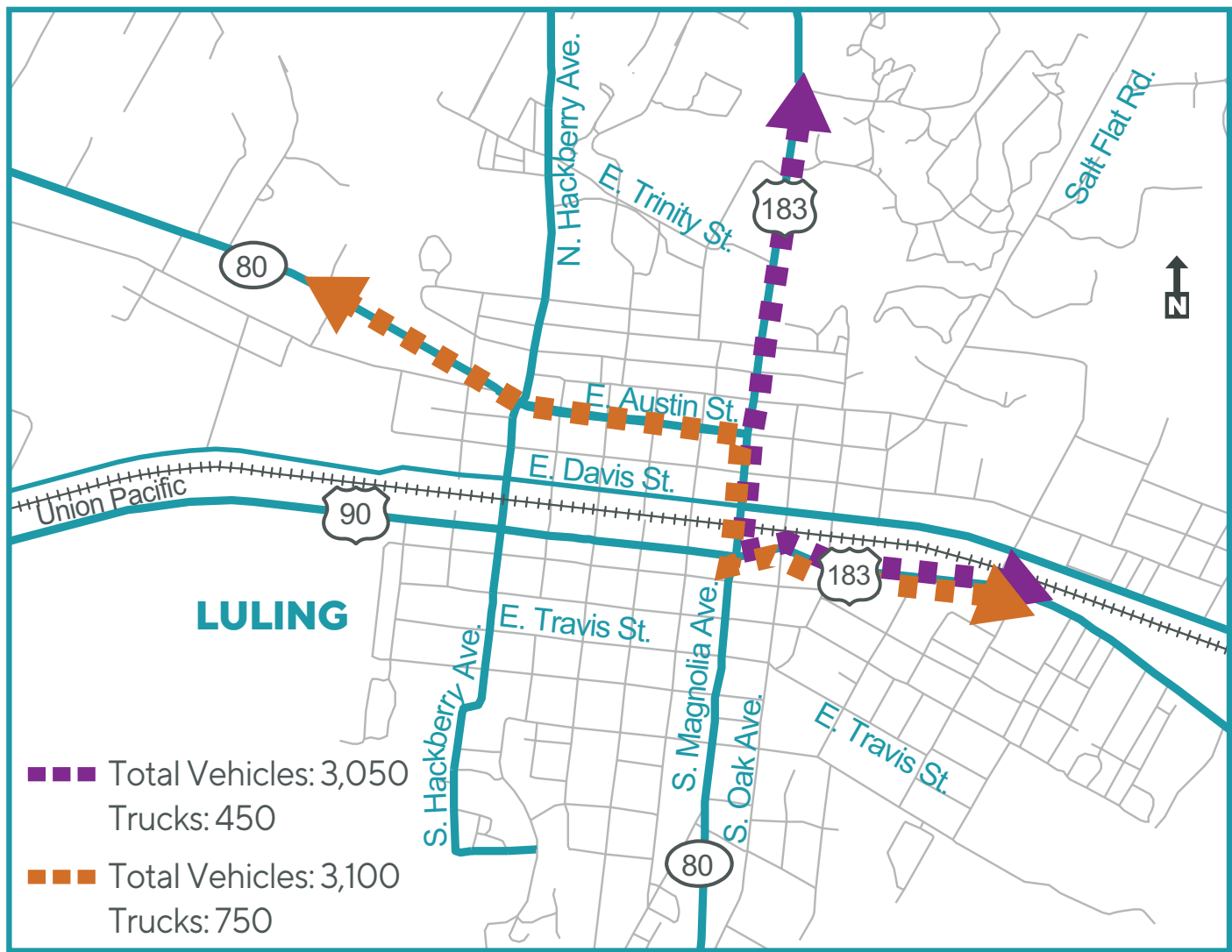
NEXT STEPS

- Present recommendations to Luling City Council, Caldwell County Commissioners Court, and the CAMPO Transportation Policy Board
- Include projects in CAMPO plans
- Secure funding for near-term improvements
- Complete environmental study, design, and engineering for near-term improvements
- Evaluate travel and consider when long-term improvements are needed

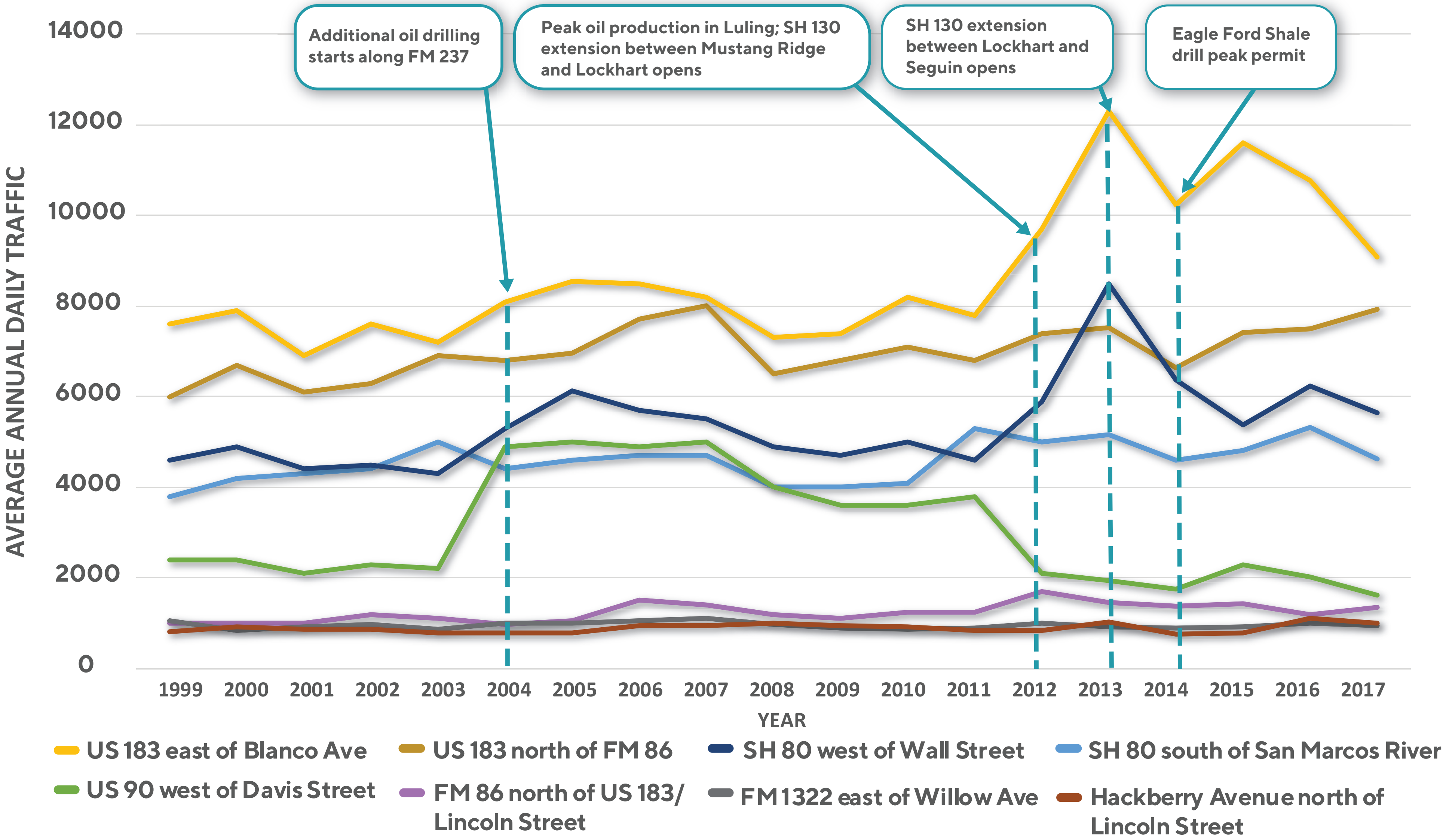
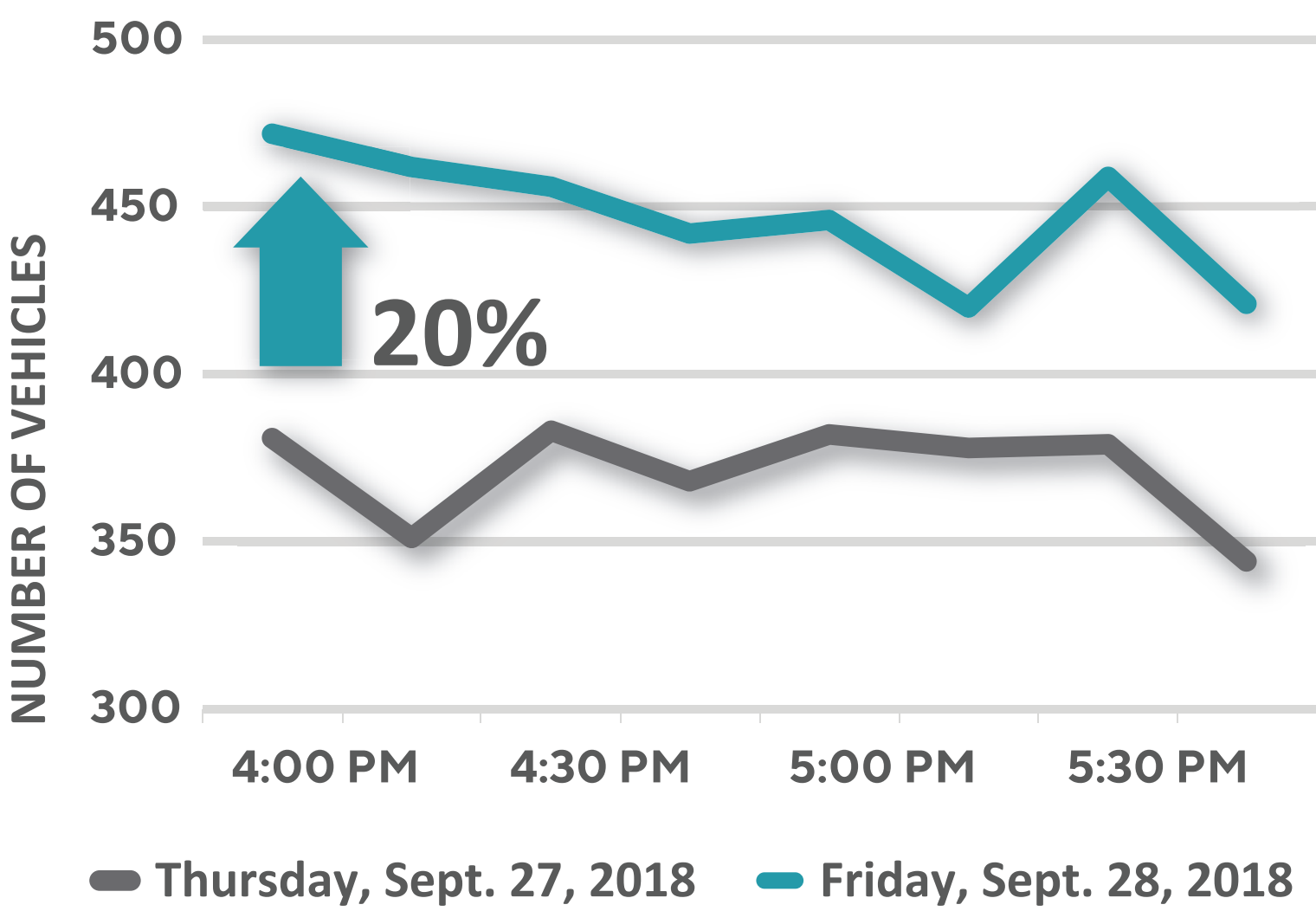


TRAFFIC DATA

2018 Average Daily Traffic Counts



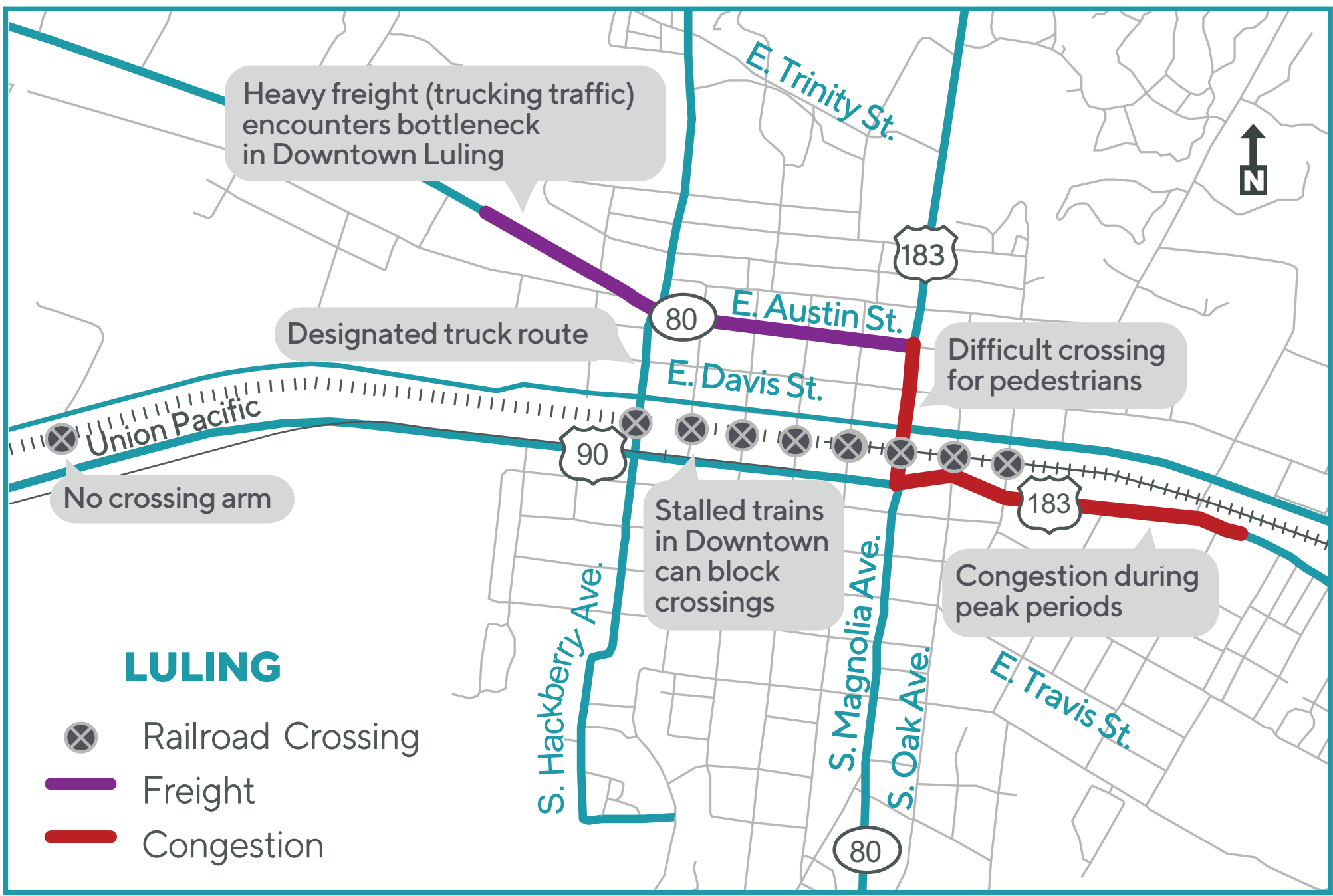
Magnolia at Pierce Traffic Counts



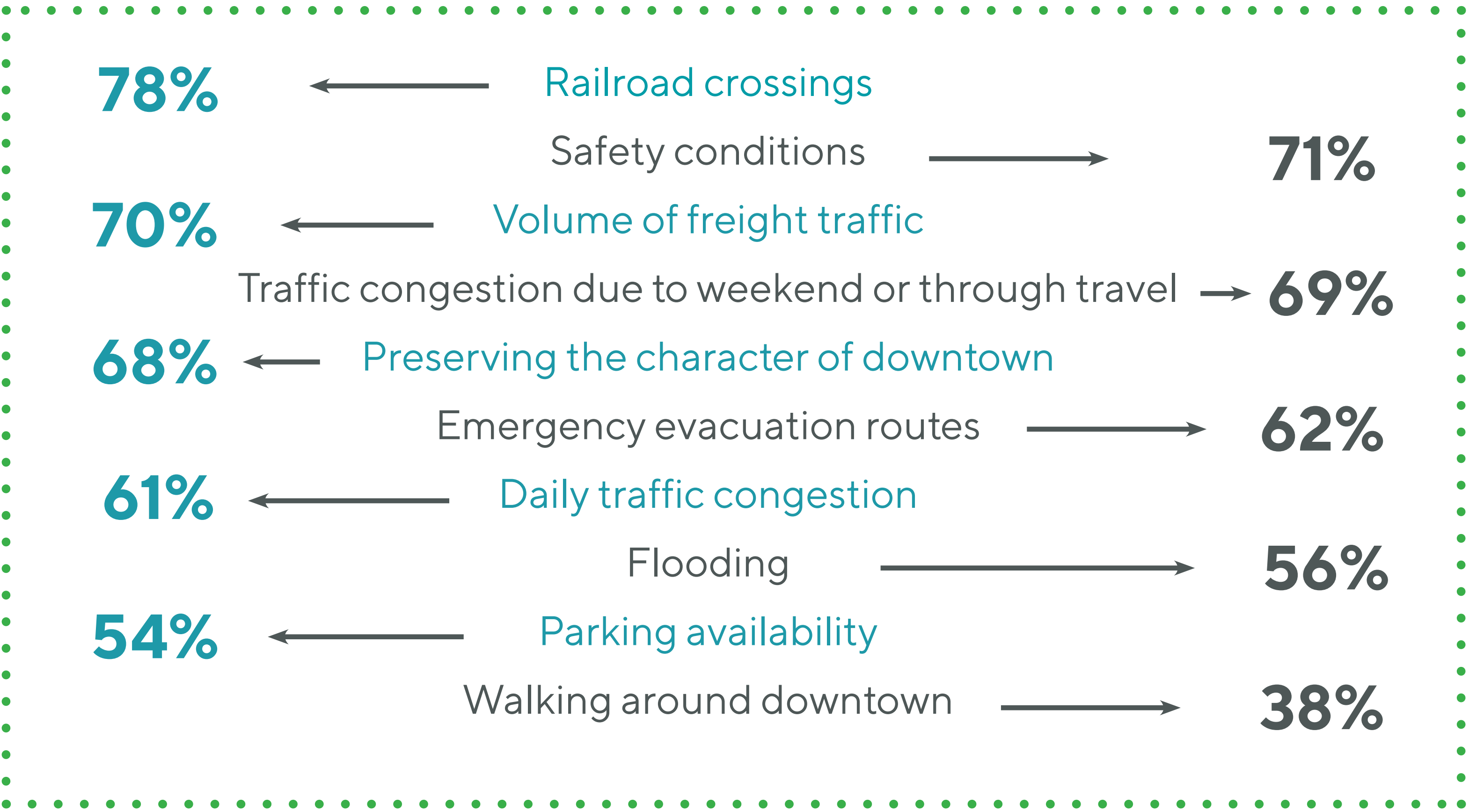
Sources: TxDOT traffic counts 1999–2018, study team traffic counts 2018

WHAT WE HEARD

Over 250 surveys and 100 comments were used to understand the community’s needs and concerns, as well as develop recommendations for potential improvement options.

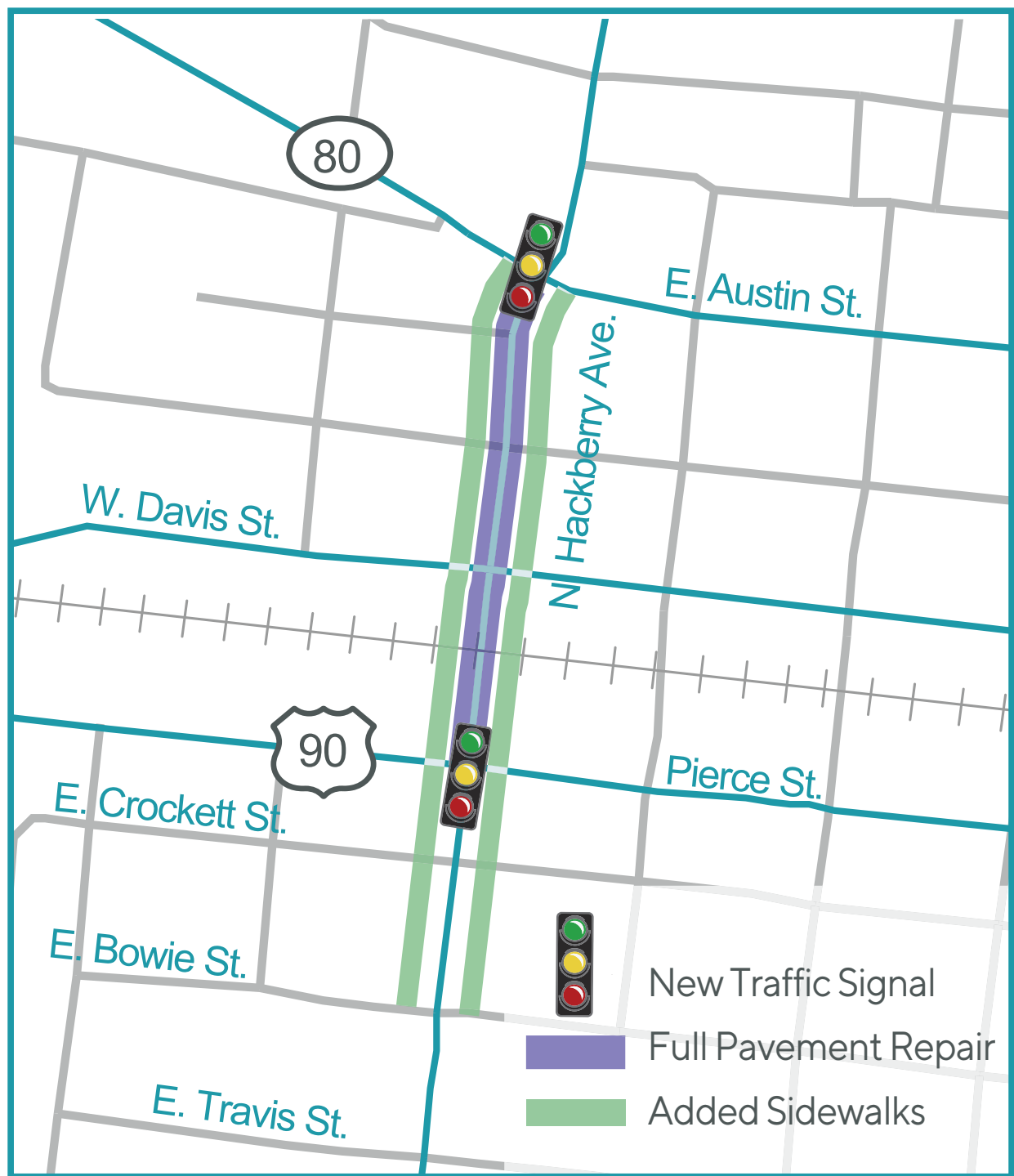


Community Concerns as Percentages



NEAR-TERM OPTIONS

Potential near-term improvements could be implemented over the next five years by TxDOT, Caldwell County, the City of Luling, or a partnership between these agencies. Funding for potential improvements has not been identified, and the total estimated cost for all near-term improvements is \$1.5 million.



Hackberry Ave.

- Pavement repair from E. Austin St. to Pierce St.
- Additional sidewalks and crosswalks
- Changes to signal timing to improve traffic flow and directional signage for truck traffic at E. Austin St. and Pierce St. intersections

Additional Improvement Opportunities

City and TxDOT could further explore:

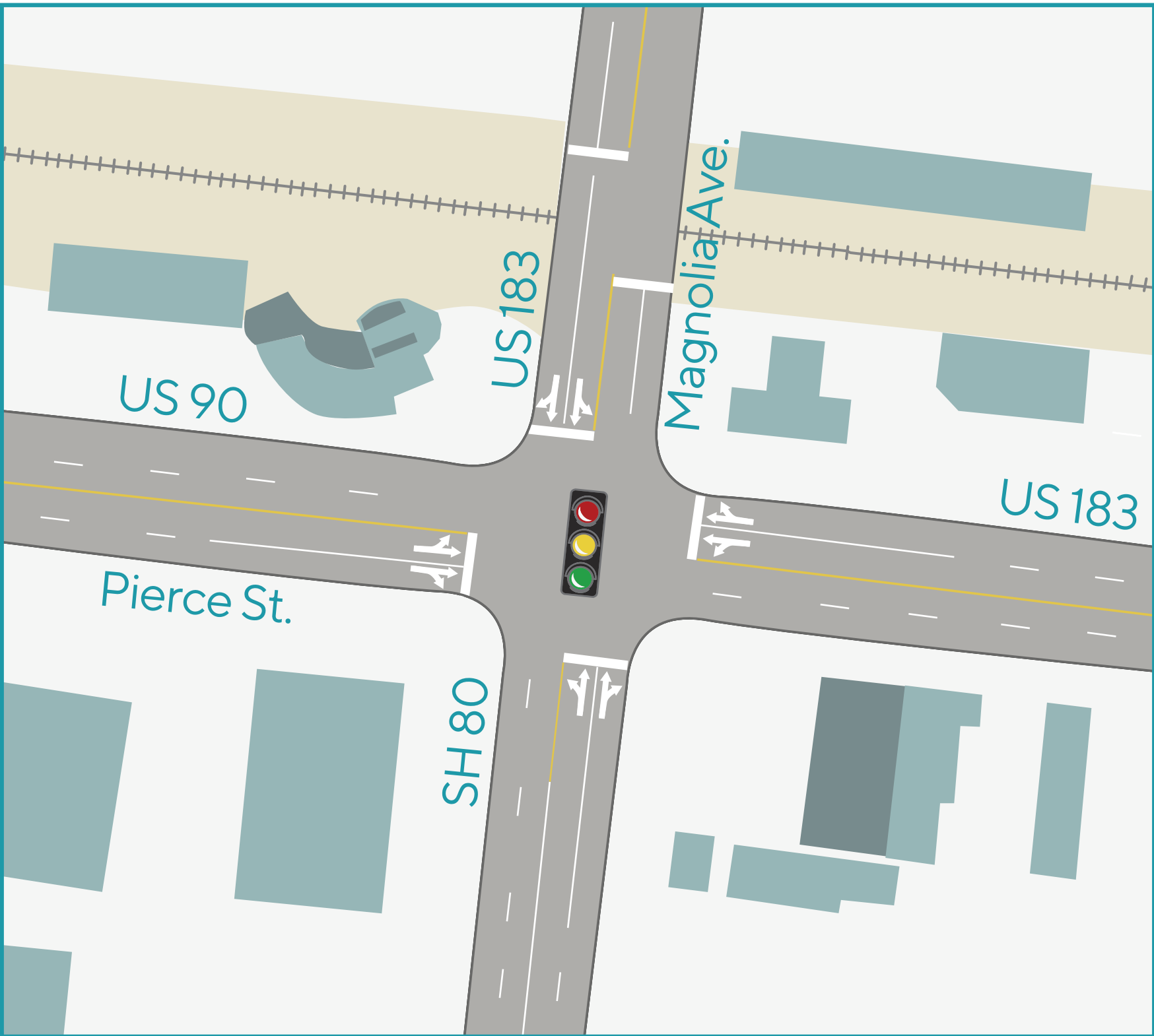
- Safe Routes To School project
- Neighborhood traffic calming treatments
- Evaluating stop signs at Walnut/Pierce

Magnolia Ave./Pierce St. Intersection

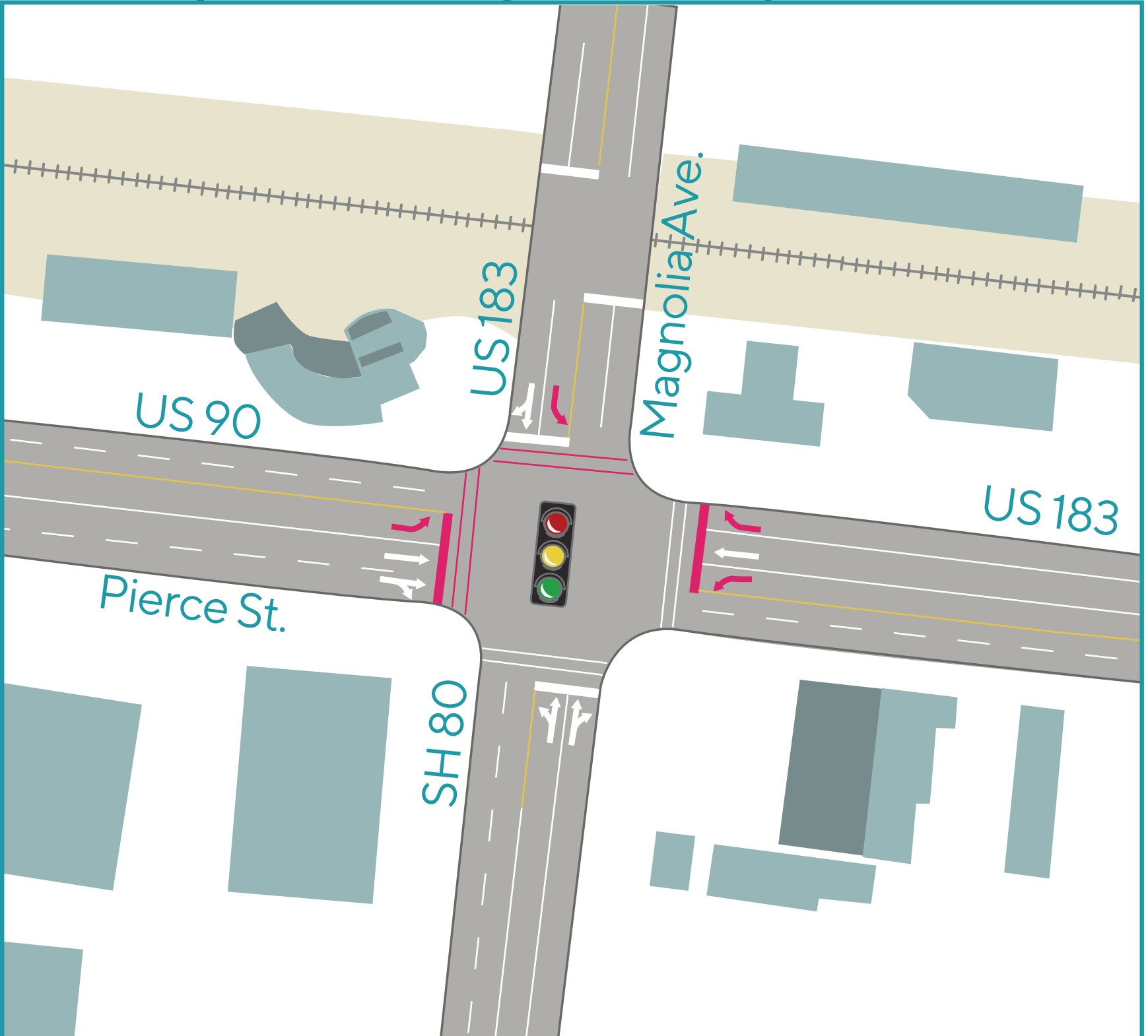
- Repaint intersection stop bars to make turning easier
- Dedicated right and left turn lanes
- Add north and west intersection crosswalks

All proposed changes illustrated in magenta.

Existing at Magnolia Ave./Pierce St.



Proposed at Magnolia Ave./Pierce St.



LONG-TERM OPTIONS

If needed, one of three potential long-term improvement options could be implemented after undergoing extensive environmental and design processes. Funding for a long-term improvement has not been identified.

A Alternate connection from SH 80 to US 90 west of downtown with railroad overpass.*

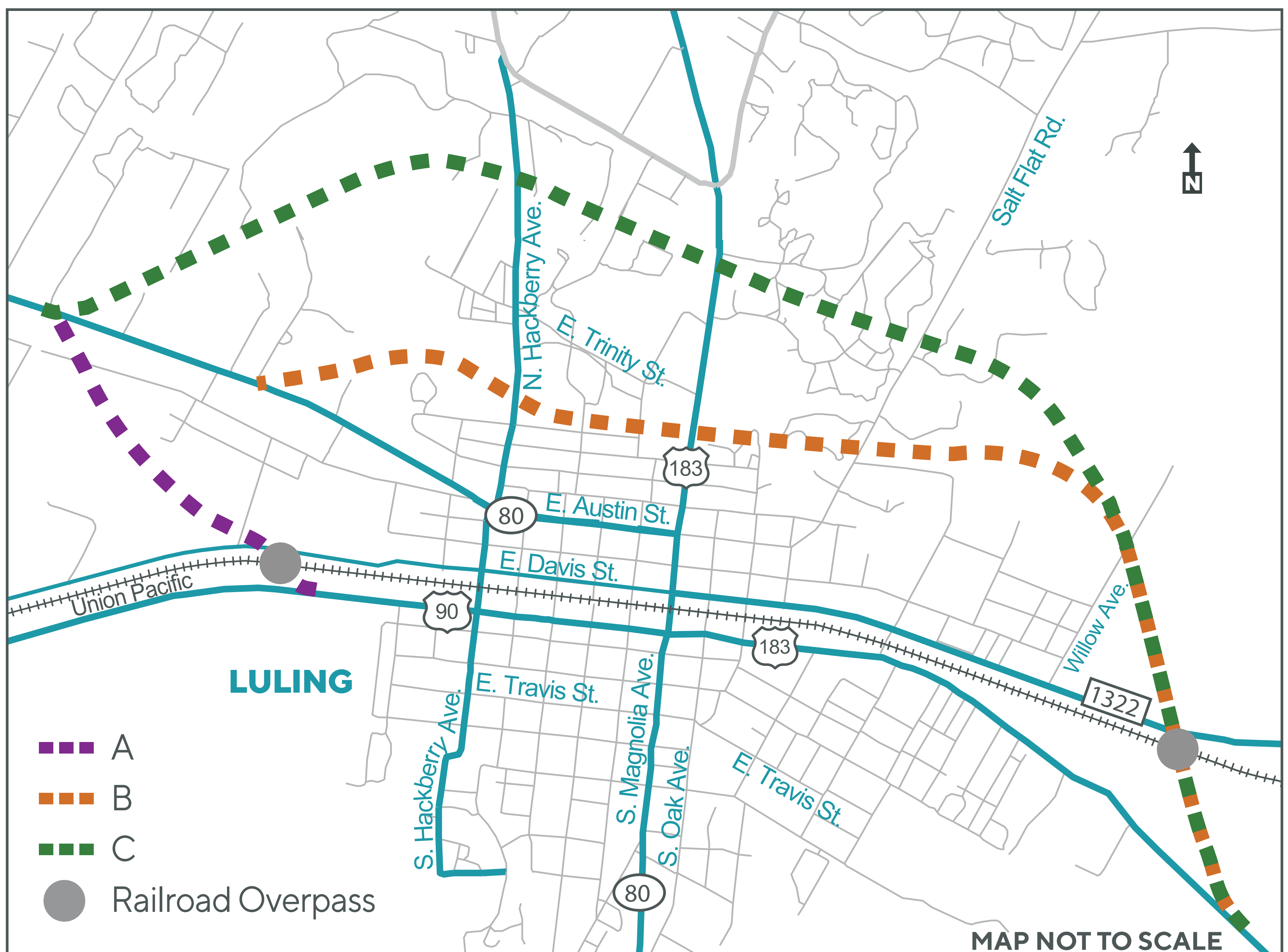
Estimated Cost - \$8 Million

B Southern alternate connection from SH 80 to US 183 east of downtown. Includes overpass of railroad and FM 1322.*

Estimated Cost - \$25 Million

C Northern alternate connection from SH 80 to US 183 east of downtown, with two crossings of the Salt Branch floodplain. Includes overpass of railroad and FM 1322.*

Estimated Cost - \$35 Million



***EACH OPTION IS AN ESTIMATION OF NEW CONNECTIONS AND REQUIRES FURTHER STUDY.**



HOW TO COMMENT

Your input is a vital part of the planning process.
You can provide comment using any of the options below.

1. Leave finished surveys in the **comment box** today

2. Complete your survey **online**

<https://www.surveymonkey.com/r/Luling>

3. Pick up a survey for a friend or **drop off completed surveys** at these community locations



City Hall



Luling Oil Museum

Meme's Mexican

SURVEY DEADLINE IS
Wednesday, May 15, 2019

