



# Bergstrom Spur Platinum Planning Study

## Western Segment: Vinson Drive to South Congress





## What We Heard: Western Segment

### Vinson Drive to Congress Avenue



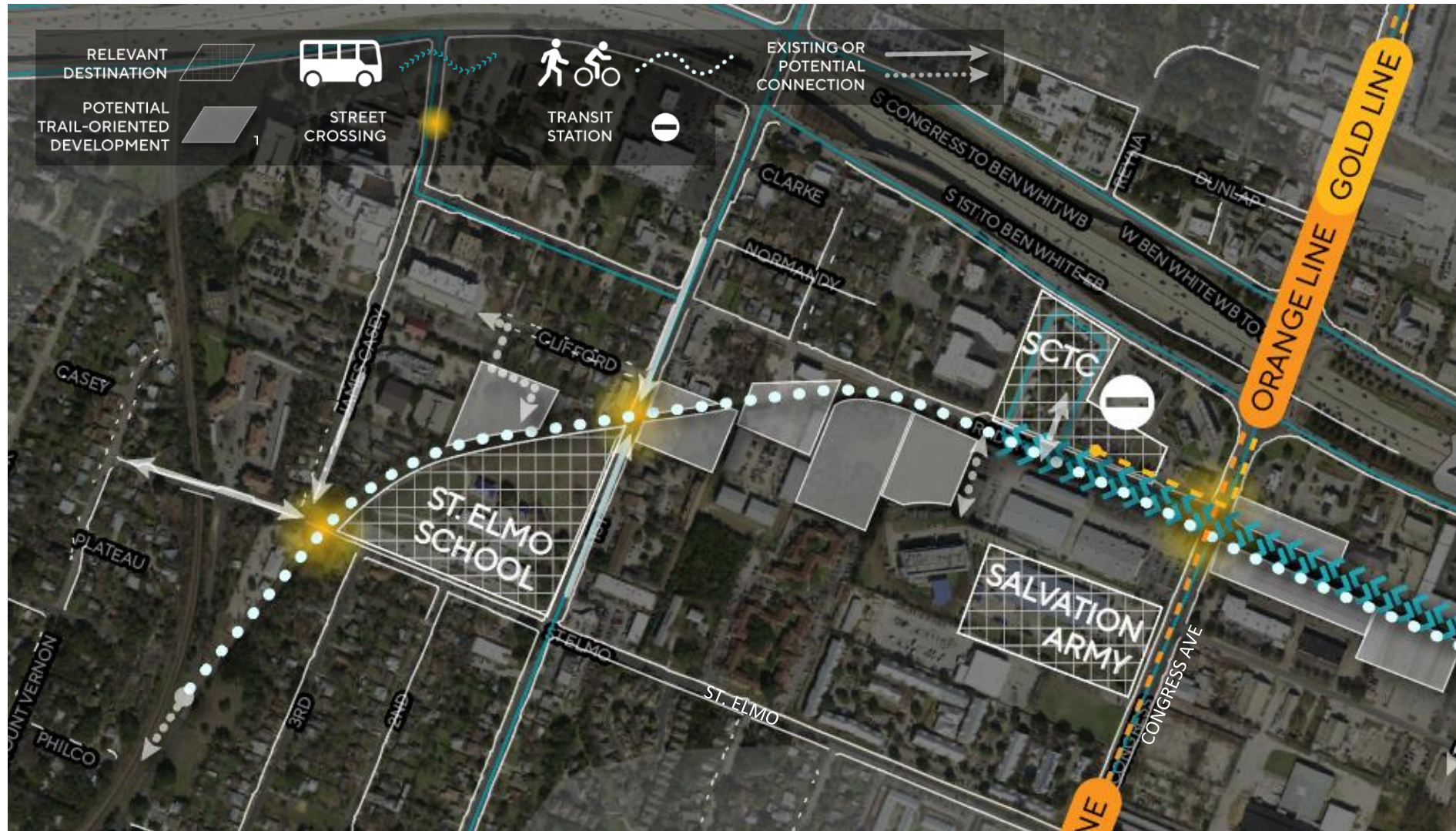
- ✓ Add features such as lighting, benches, signage, water fountains
- ✓ Consider options for small park spaces
- ✓ Provide safe walking and biking options
- ✓ Make it easier to connect to nearby trails
- ✓ Include features such as bike racks, lockers, and park and rides near South Congress Transit Center







# Western Segment Overview: Vinson Drive to Congress Avenue







# Western Segment Concepts: Vinson Drive to Congress Avenue



FUTURE LINEAR PARK



ST. ELMO ELEMENTARY



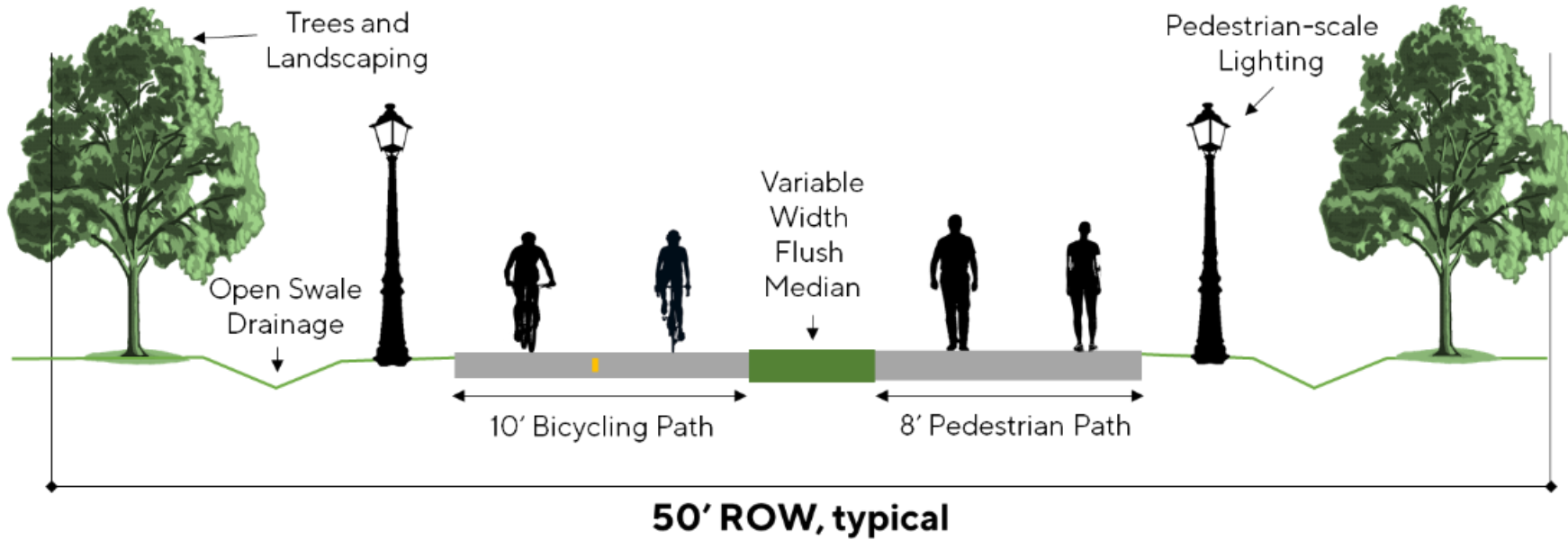
ACCESS TO DESTINATIONS AND EMPLOYERS







## Western Segment Concepts: Vinson Drive to Congress Avenue

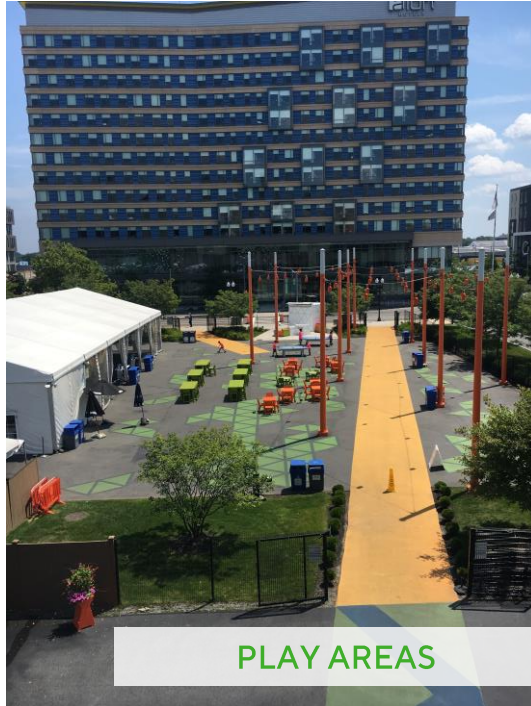


- Dual-track urban trail, linear park
- Neighborhood connections
- Safe crossings
- Trail-oriented development





## Potential Activation Site: South Congress Transit Center



Market Analysis determined significant demand for hotels, offices, airport-oriented uses, housing, and retail.





Potential Activation Site:  
South Congress Transit Center



PLAY AREAS AND GATHERING PLACES



PUBLIC ART



## Share Your Input



Take the survey at  
[campotexas.org/get-involved](http://campotexas.org/get-involved)



Submit comments or request printed materials  
at [512-761-2224](tel:5127612224) or email  
[comments@campotexas.org](mailto:comments@campotexas.org)

