



Bergstrom Spur Platinum Planning Study

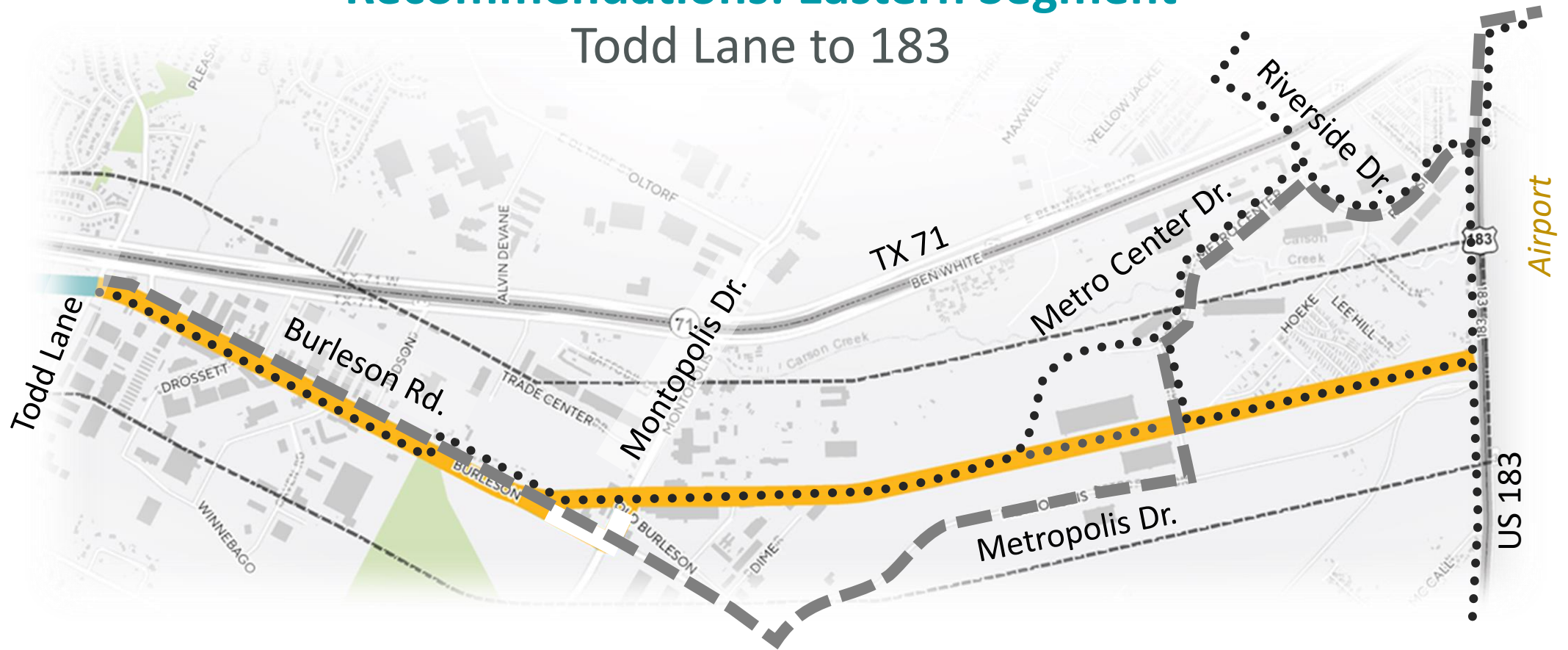
Eastern Segment: Todd Lane to 183





Recommendations: Eastern Segment

Todd Lane to 183



- Continue urban trail with safe street crossings
- Future transit along existing roadways
- Connect to commercial and warehouse development, employers, and the airport

- Create opportunities for economic development
- Connect to existing trails and nearby parks
- Connect to proposed Capital Metro Blue Line
- Transform corridor into a destination



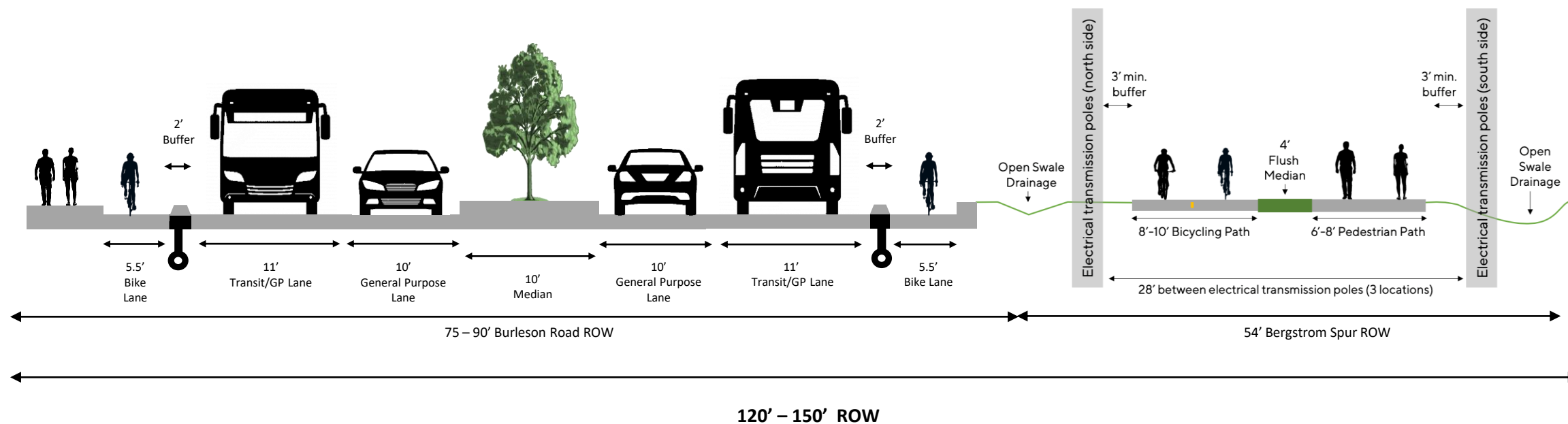


Potential Activation Site Concept: Todd Lane Transit Center





Recommendations: Burleson Road

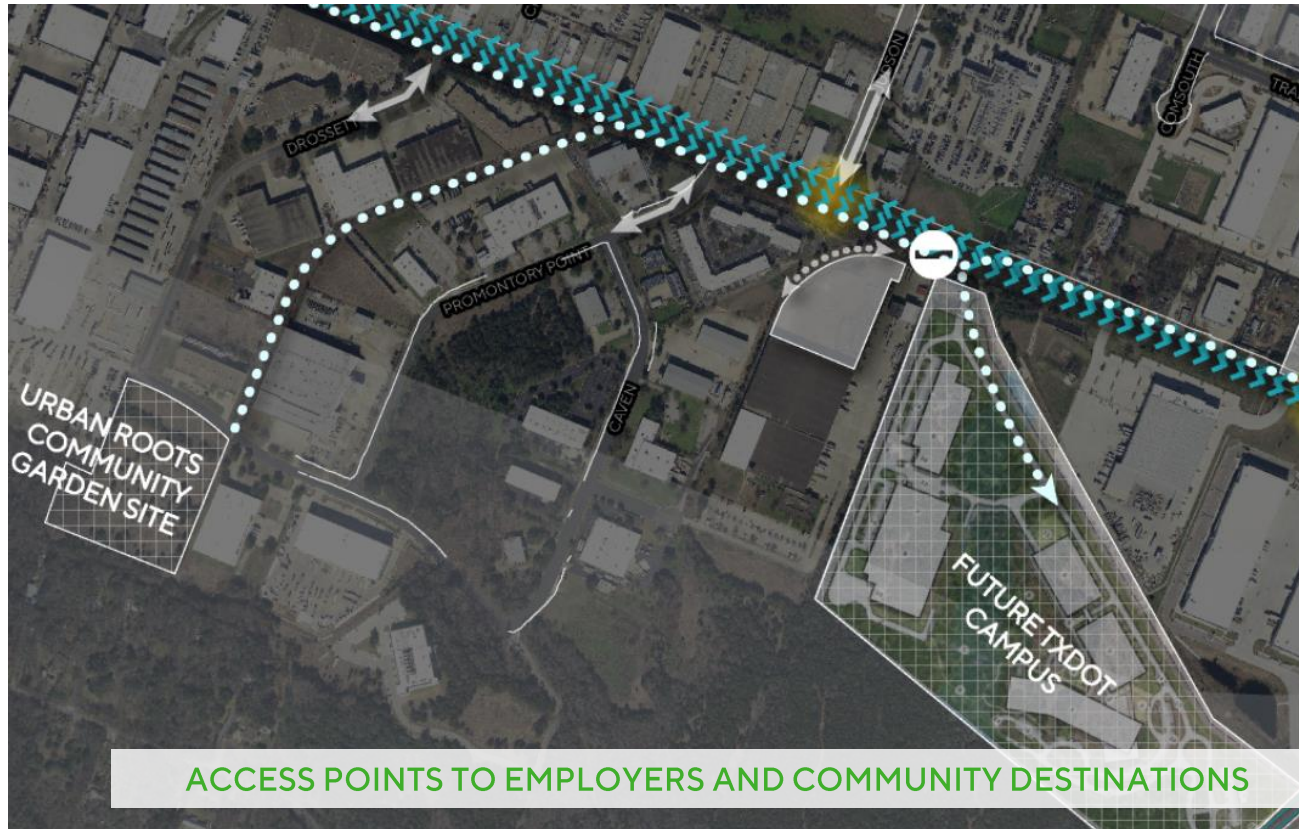


Burleson Rd from Todd Ln to Montopolis Rd





Trail and Transit Concepts: Eastern Segment



Connect to commercial and community destinations





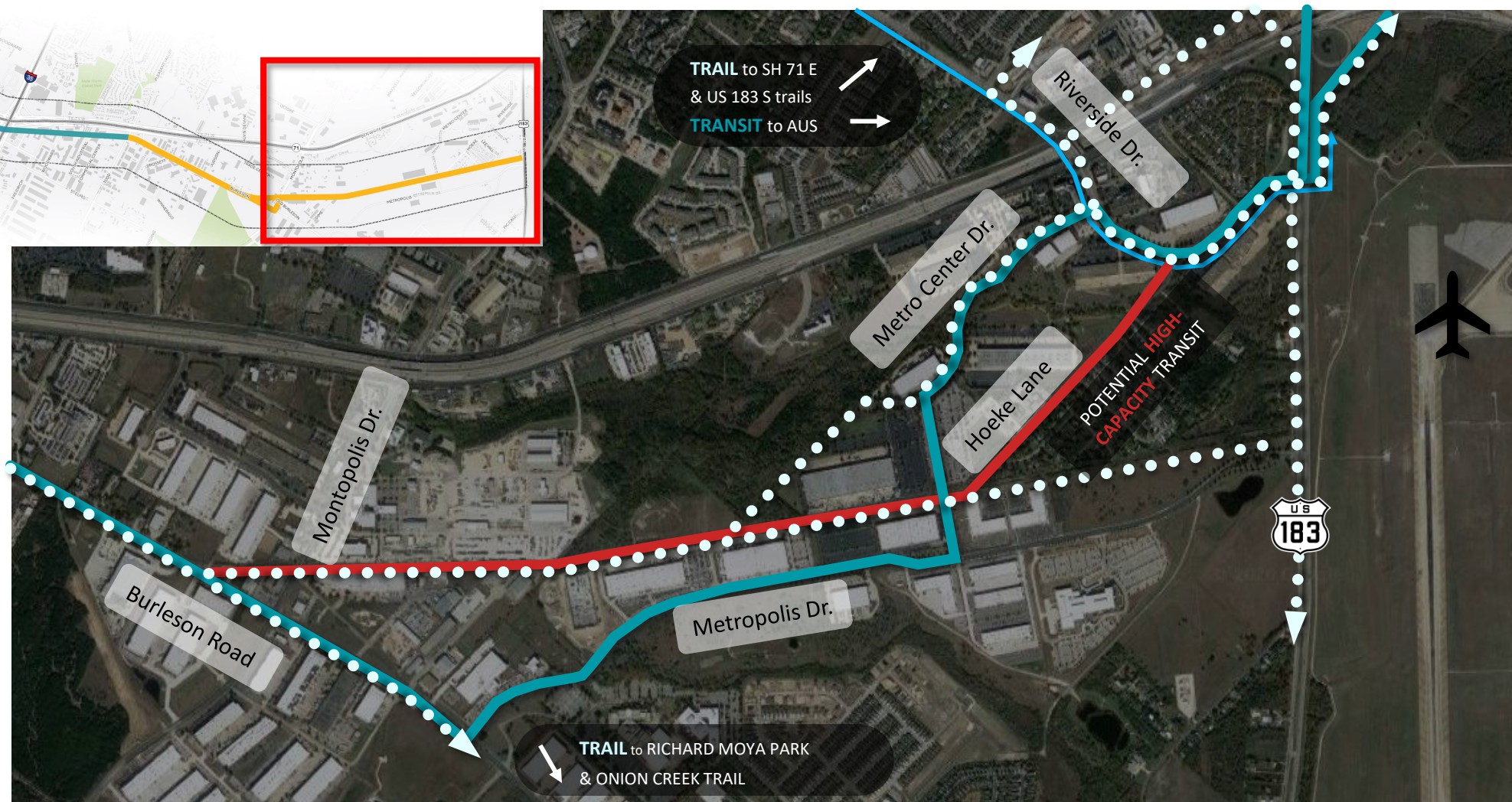
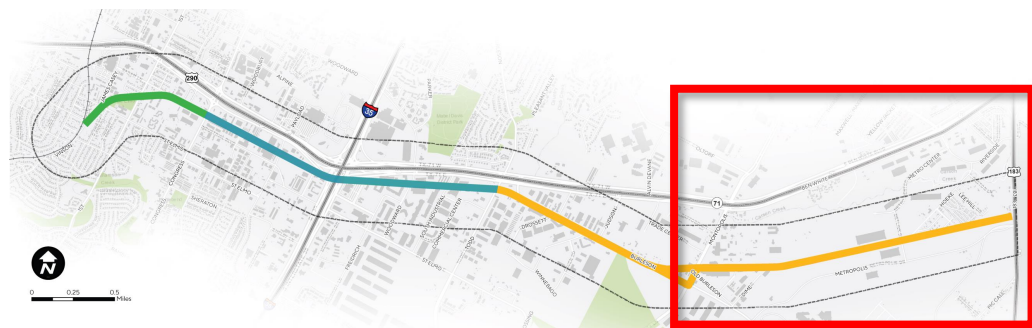
Eastern Segment

Controlled Crossing Concepts





Trail and Transit Concepts: Eastern Segment





Share Your Input



Take the survey at
campotexas.org/get-involved



Submit comments or request printed materials
at [512-761-2224](tel:512-761-2224) or email
comments@campotexas.org

