

What is CAMPO?

The Capital Area Metropolitan Planning Organization (CAMPO) is **the Austin region's transportation decision-making body, coordinating** regional transportation planning **between counties, local governments and transportation agencies**. The organization is made up of a **21-member Transportation Policy Board (TPB)** that makes decisions on CAMPO policy and allocates federal transportation funds for the region, a **24-member Technical Advisory Committee (TAC)** that provides technical expertise and recommendations to inform the Transportation Policy Board, and the **Executive Director**, who reports to the TPB and oversees the CAMPO staff.



What is an MPO?

MPO stands for metropolitan planning organization, which is **regional transportation planning entity** designated by the federal government. MPOs were introduced by the Federal-Aid Highway Act of 1962, which requires the **formation of an MPO** for any urbanized area with a **population greater than 50,000**. CAMPO is one of 25 MPOs in Texas, and one of 408 in the United States.

Where is CAMPO?

CAMPO conducts regional transportation planning work within six counties: **Bastrop, Burnet, Caldwell, Hays, Travis, and Williamson**.

What does CAMPO do?

CAMPO **closely coordinates with local governments and transportation agencies**, such as TxDOT, Capital Metro and CARTS, in planning for regional transportation improvements. This includes working directly with local governments on technical studies related to transportation and economic development. However, **CAMPO does not construct projects** – that responsibility lies with project sponsors, such as cities, counties, and transportation agencies.

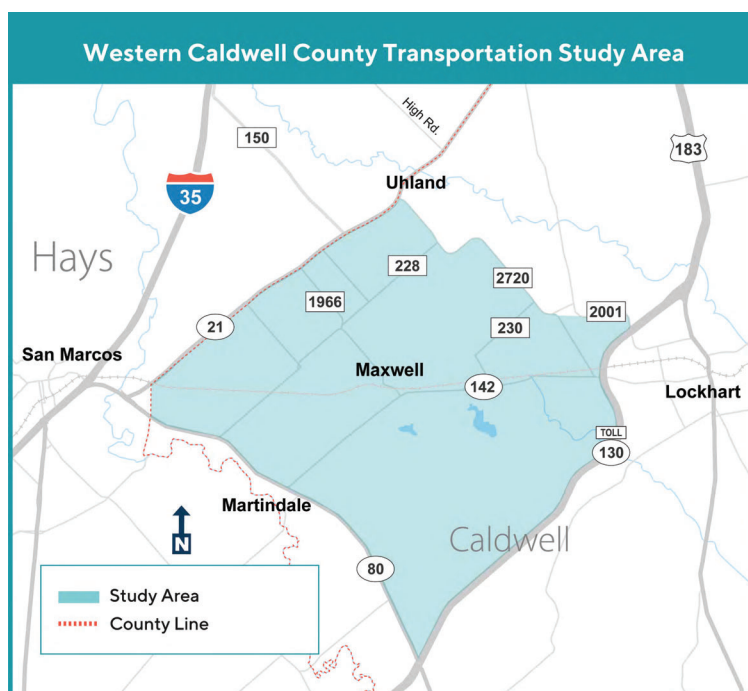
CAMPO is responsible for creating two primary regional planning documents– one **long-range** and one **short-range**:

- > the **Regional Transportation Plan (RTP)** is a 20+ year plan, which is adopted every five years, and;
- > the **Transportation Improvement Program (TIP)**, which is adopted every two years but covers a four-year window.

LEARN ABOUT THE STUDY

Western Caldwell County Transportation Study

This study explores potential options for additional east-west connections between major highways in western Caldwell County.



SHARE YOUR THOUGHTS



Leave comments on an
interactive map



Complete a **survey**



Email comments to
comments@campotexas.org



Mail comments to
Attn: WCCTS
PO Box 5459
Austin, TX 78763

ALL COMMENTS MUST BE SUBMITTED BY
FRIDAY, OCTOBER 30, 2020

STUDY INTRODUCTION

STUDY NEED



Caldwell County Growth

Caldwell County and the surrounding areas are experiencing rapid growth and increased traffic congestion on area roads. With more people moving to the area, it's important to begin planning today for future transportation needs. With increased population and employment in the region, more residents are traveling between counties, so this study will focus on travel within western Caldwell County while also considering travel into and out of the county.

STUDY GOALS & PURPOSE

1

Assess current and projected traffic

2

Outline anticipated development and area growth

3

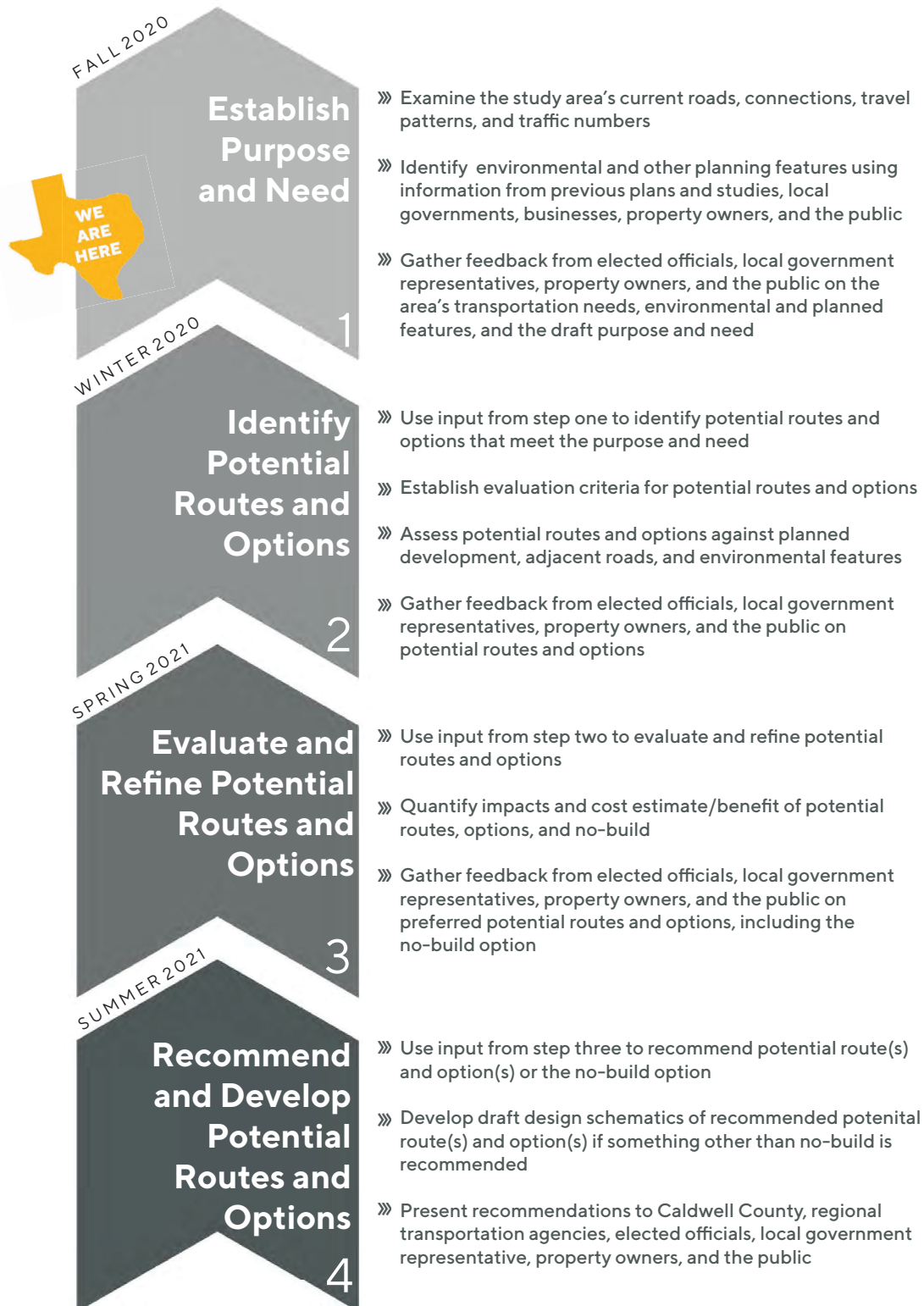
Recommend preliminary configurations for future transportation solutions



Caldwell County will be responsible for moving forward with any recommendations from this study, including further studies, additional public input, construction of any recommendations, and securing funding for all additional steps.

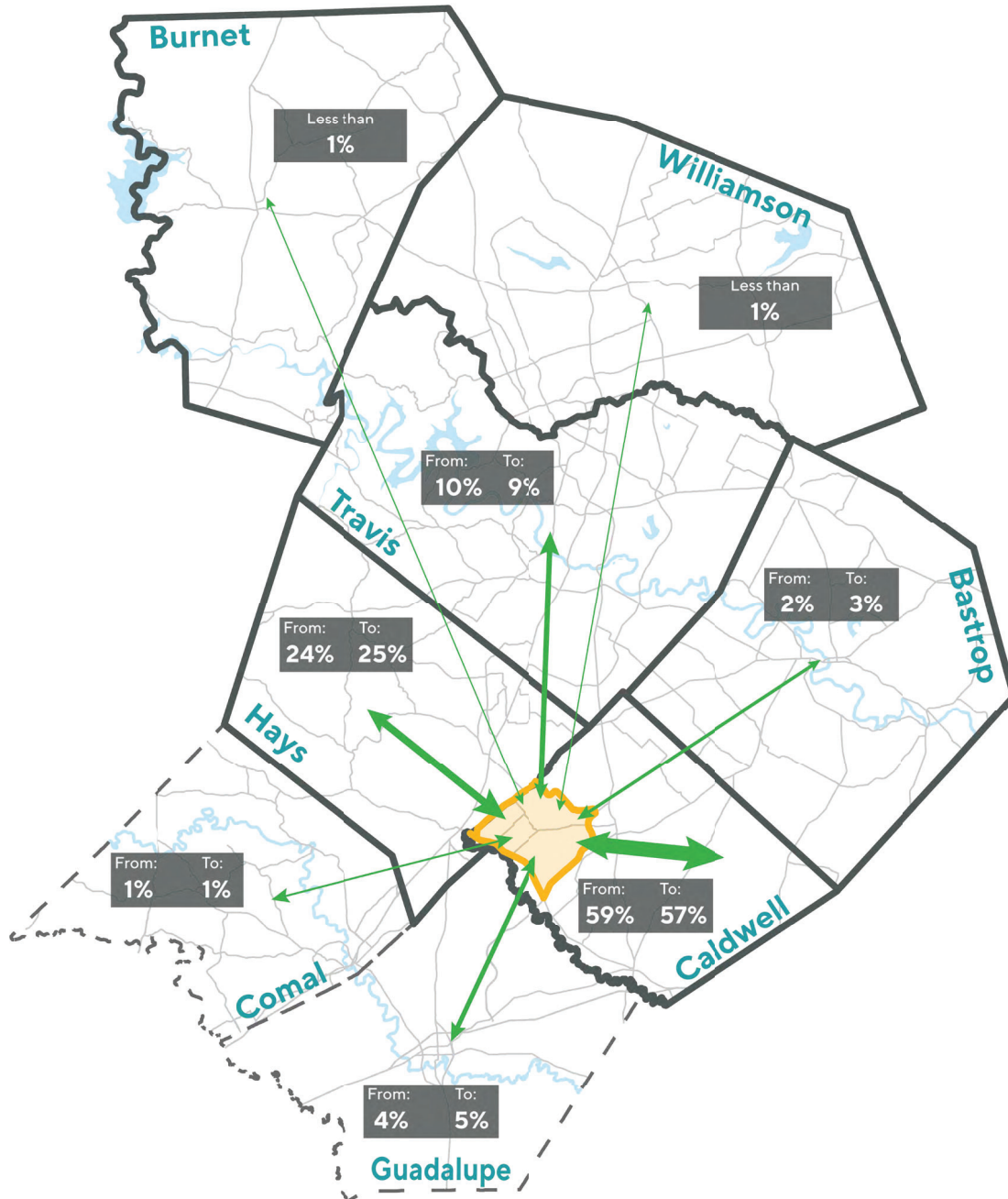


STUDY TIMELINE



NOTE: Caldwell County will be responsible for moving forward with recommendations beyond step four including performing a detailed environmental study, gathering additional public input, constructing any recommendations, and securing funding for all additional steps.

EXISTING TRAVEL PATTERNS



Travel Data Source:

AirSage's Nationwide Trip Matrix (NWTM)
October - November 2019, Monday - Thursday,
Peak Trip Patterns from Study Area (6-9 am & 3:30-6:30 pm)

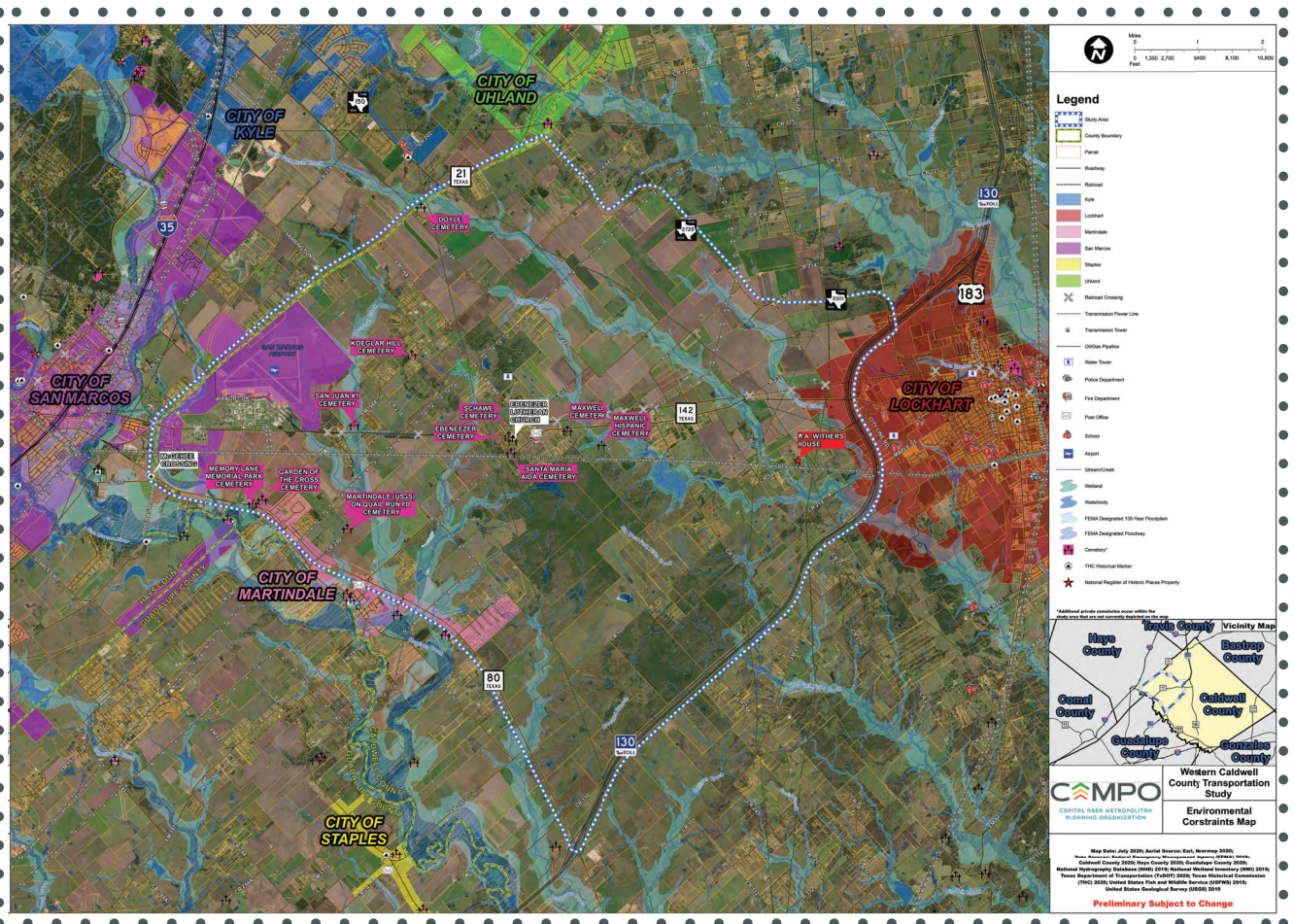
*Percentages represent travel to/from the study area to eight surrounding counties.



STUDY AREA MAP

Click on the map and follow the prompts to provide comments on specific locations within the study area.

Interactive map not supported in Internet Explorer.





HOW TO COMMENT

REVIEW MATERIALS

ASK QUESTIONS

SHARE YOUR THOUGHTS



Leave comments on
an **interactive map**



Email comments to
comments@campotexas.org



Complete a **survey**



Mail comments to
Attn: WCCTS
PO Box 5459
Austin, TX 78763

ALL COMMENTS MUST BE SUBMITTED BY
FRIDAY, OCTOBER 30, 2020

