

Northeast Burnet County Transportation Study

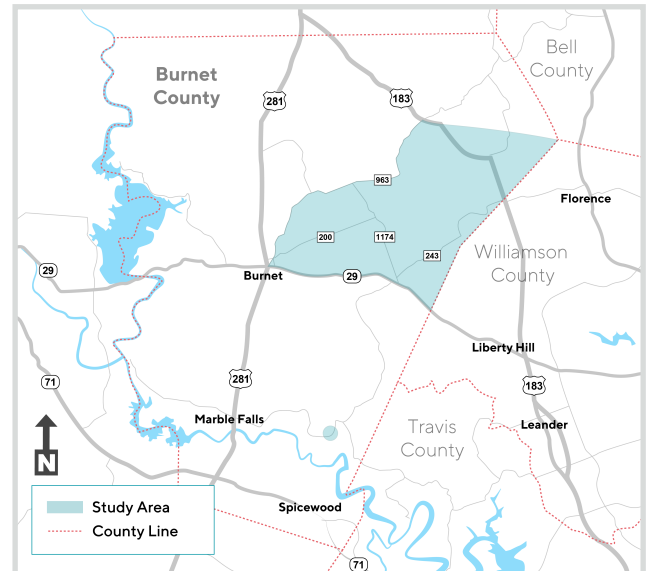


OVERVIEW

The Capital Area Metropolitan Planning Organization (CAMPO) and Burnet County are working together to identify transportation needs and recommendations for improvements in Northeast Burnet County. The Study will include the evaluation of improvements along existing roadways.

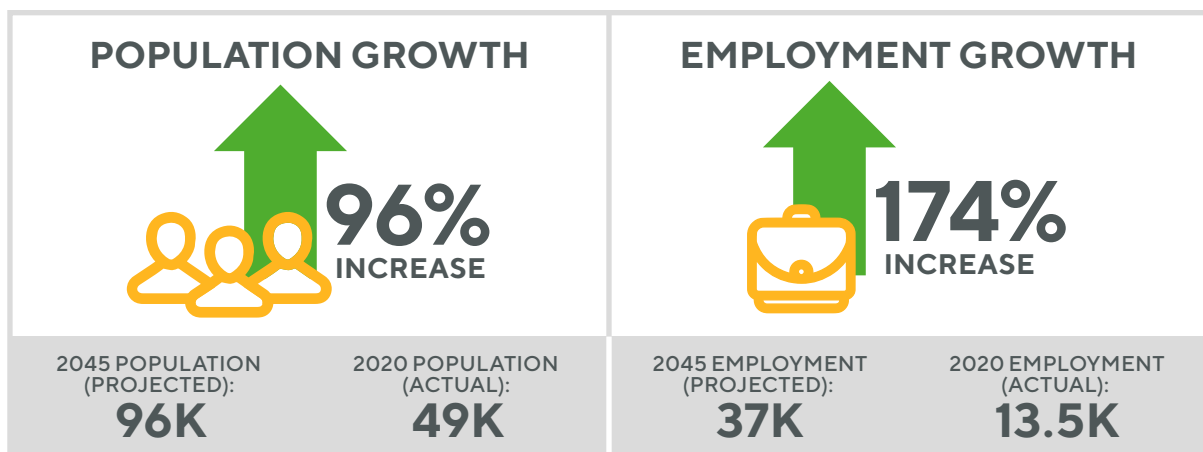
WHY THE STUDY IS NEEDED

Burnet County and the six-county CAMPO region is experiencing significant growth and this growth is anticipated to continue. This Study is being conducted now to plan for future transportation needs as the population and employment in the region increase.



Northeast Burnet County Transportation Study Area

Burnet County



Burnet County Growth

WHAT THE STUDY WILL ACCOMPLISH

The Northeast Burnet County Transportation Study will evaluate current and future roadway conditions, anticipated development, environmental constraints, and use public feedback to identify recommendations for transportation improvements in the area. The County could then use these recommendations to complete additional environmental analysis and schematic and detailed design for potential projects.

PROCESS & TIMELINE



1

Data Collection and Analysis SUMMER 2023

- › Analyze the existing transportation network and review current and past plans and studies
- › Collect and analyze existing and projected future traffic operations and safety data
- › Use public feedback to identify environmental features and constraints and community resources

2

Identify and Analyze Potential Improvements FALL 2023

- › Develop and analyze a range of transportation improvements for each study corridor that considers planned development, connecting roads, and environmental features

3

Recommend Potential Improvements WINTER 2023

- › Use community input and information from previous steps to recommend potential improvement options
- › Present recommendations to the public, local government representatives, and regional transportation agencies

NOTE: Burnet County will be responsible for moving forward with recommendations, including securing funding for additional steps, performing detailed environmental studies, gathering additional public input, and constructing any recommendations.



Scan now to
visit the project
webpage

»» GET INVOLVED

Visit the project webpage to learn more and sign up for updates:
campotexas.org/local-plans-and-studies/northeast-burnet-county-transportation-study

CONTACT

Doise Miers, CAMPO



737-226-4840



doise.miers@campotexas.org

Contact the study team to learn more and request a speaker for community meetings.