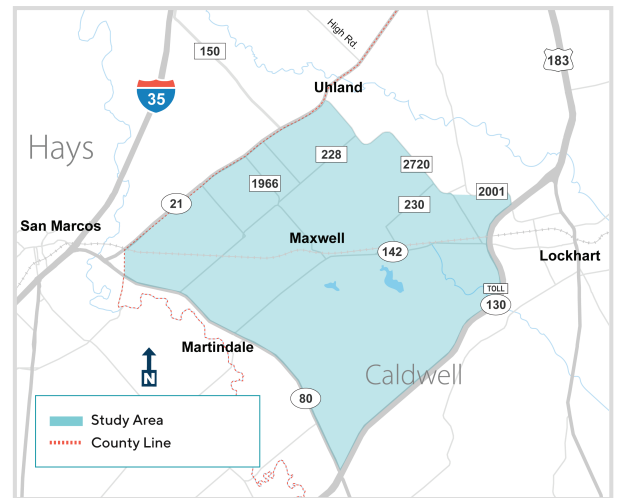


# Western Caldwell County Transportation Study

## Overview

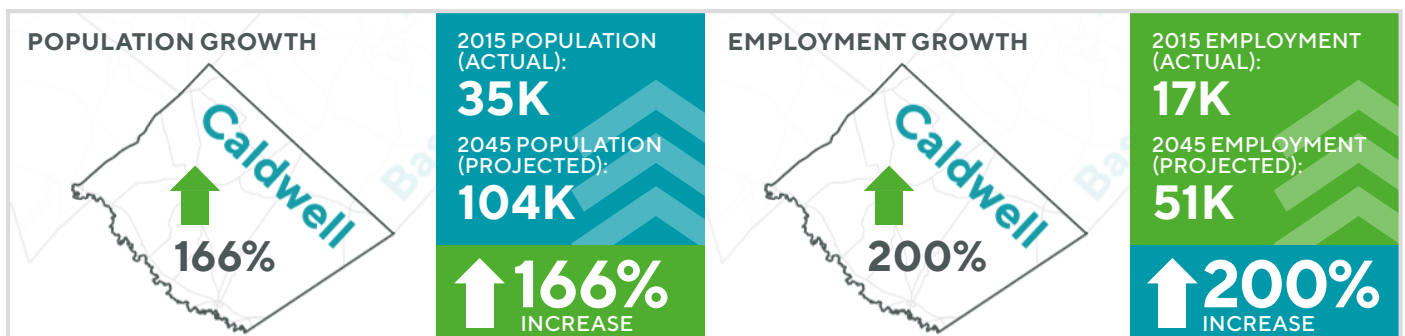
The Capital Area Metropolitan Planning Organization (CAMPO) and Caldwell County are working together to explore potential options for additional east-west connections between major highways in western Caldwell County. Based on the needs identified in the 2013 Caldwell County Transportation Plan, the Western Caldwell County Transportation Study will evaluate transportation solutions including potential new road corridors or extending/modifying existing roads to help with east-west travel.



Western Caldwell County Transportation Study Area

## Why the Study is Needed

Caldwell County and the surrounding areas are experiencing rapid growth and increased traffic congestion on area roads. With more people moving to the area, it's important to begin planning today for future transportation needs. With increased population and employment in the region, more residents are traveling between counties, so this study will focus on travel within western Caldwell County while also considering travel into and out of the county.



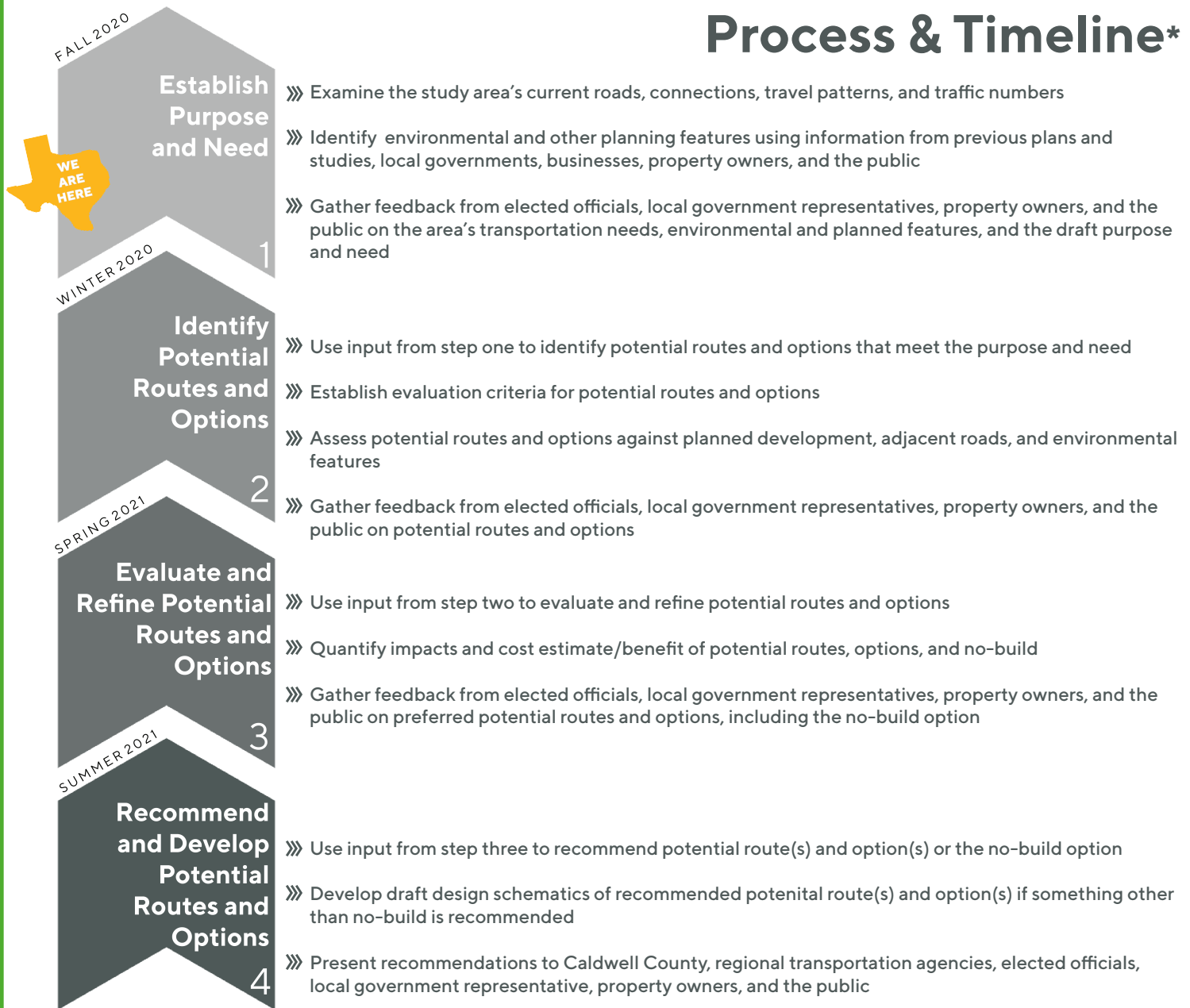
Caldwell County Growth

## What the Study Will Accomplish

The Western Caldwell County Transportation Study will look at current and projected traffic, anticipated development, and other growth-related data to see if additional east-west connections are needed in the future. This study may include preliminary configurations for new and existing roads and other transportation solutions that Caldwell County could potentially use in the future to improve east-west connections. An environmental study, detailed design schematics, and additional funding are needed to move beyond this initial study.

# Western Caldwell County Transportation Study

## Process & Timeline\*



**NOTE:** Caldwell County will be responsible for moving forward with recommendations beyond step four including performing a detailed environmental study, gathering additional public input, constructing any recommendations, and securing funding for all additional steps.

\*Timeline is subject to change

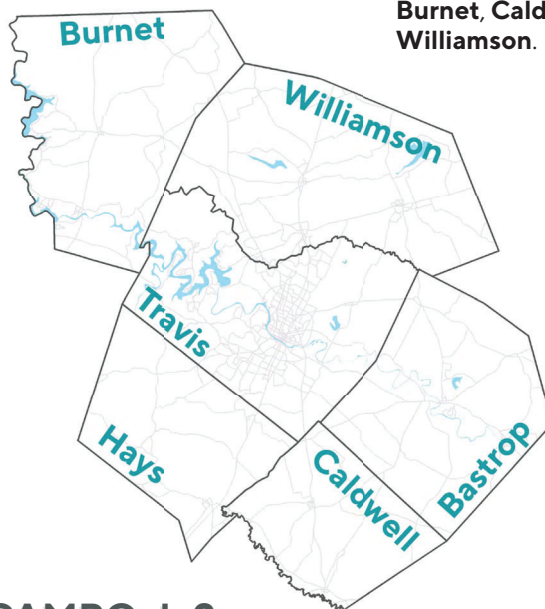
### Ways to Stay Involved

- Presentation or questions, contact **Ryan Collins** at [Ryan.Collins@campotexas.org](mailto:Ryan.Collins@campotexas.org) or 512-215-2541
- Sign-up for email updates and visit [campotexas.org/get-involved/](https://campotexas.org/get-involved/)
- Attend future public open houses

[comments@campotexas.org](mailto:comments@campotexas.org) | [www.campotexas.org](https://www.campotexas.org) | @CAMPOtexas

## What is CAMPO?

The Capital Area Metropolitan Planning Organization (CAMPO) is **the Austin region's transportation decision-making body, coordinating** regional transportation planning **between counties, local governments and transportation agencies**. The organization is made up of a **21-member Transportation Policy Board (TPB)** that makes decisions on CAMPO policy and allocates federal transportation funds for the region, a **24-member Technical Advisory Committee (TAC)** that provides technical expertise and recommendations to inform the Transportation Policy Board, and the **Executive Director**, who reports to the TPB and oversees the CAMPO staff.



## What is an MPO?

MPO stands for metropolitan planning organization, which is **regional transportation planning entity** designated by the federal government. MPOs were introduced by the Federal-Aid Highway Act of 1962, which requires the **formation of an MPO** for any urbanized area with a **population greater than 50,000**. CAMPO is one of 25 MPOs in Texas, and one of 408 in the United States.

## Where is CAMPO?

CAMPO conducts regional transportation planning work within six counties: **Bastrop, Burnet, Caldwell, Hays, Travis, and Williamson**.

## What does CAMPO do?

CAMPO **closely coordinates with local governments and transportation agencies**, such as TxDOT, Capital Metro and CARTS, in planning for regional transportation improvements. This includes working directly with local governments on technical studies related to transportation and economic development. However, **CAMPO does not construct projects** – that responsibility lies with project sponsors, such as cities, counties, and transportation agencies.

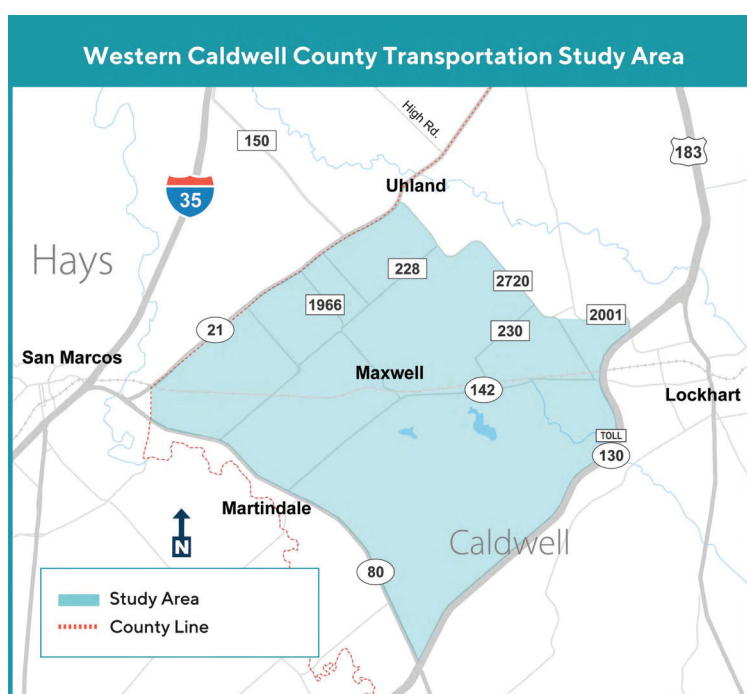
CAMPO is responsible for creating two primary regional planning documents– one **long-range** and one **short-range**:

- > the **Regional Transportation Plan (RTP)** is a 20+ year plan, which is adopted every five years, and;
- > the **Transportation Improvement Program (TIP)**, which is adopted every two years but covers a four-year window.

## LEARN ABOUT THE STUDY

### Western Caldwell County Transportation Study

This study explores potential options for additional east-west connections between major highways in western Caldwell County.



## SHARE YOUR THOUGHTS



Leave comments on an  
interactive map



Complete a **survey**



Email comments to  
[comments@campotexas.org](mailto:comments@campotexas.org)



Mail comments to  
**Attn: WCCTS**  
**PO Box 5459**  
**Austin, TX 78763**

ALL COMMENTS MUST BE SUBMITTED BY  
**FRIDAY, OCTOBER 30, 2020**



# STUDY INTRODUCTION

## STUDY NEED



*Caldwell County Growth*

Caldwell County and the surrounding areas are experiencing rapid growth and increased traffic congestion on area roads. With more people moving to the area, it's important to begin planning today for future transportation needs. With increased population and employment in the region, more residents are traveling between counties, so this study will focus on travel within western Caldwell County while also considering travel into and out of the county.

## STUDY GOALS & PURPOSE

1

**Assess** current and projected traffic

2

**Outline** anticipated development and area growth

3

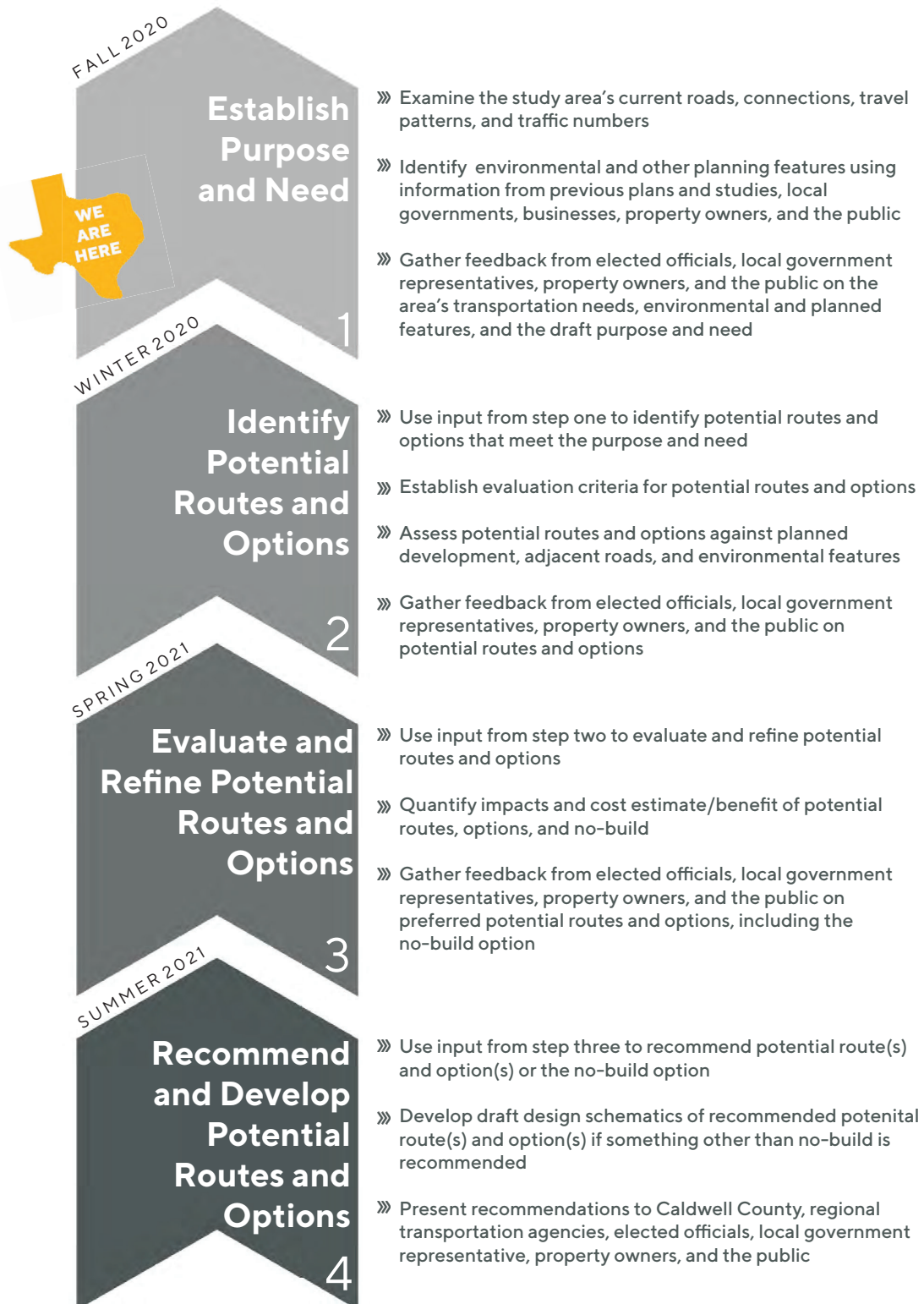
**Recommend** preliminary configurations for future transportation solutions



**Caldwell County will be responsible for moving forward with any recommendations from this study, including further studies, additional public input, construction of any recommendations, and securing funding for all additional steps.**

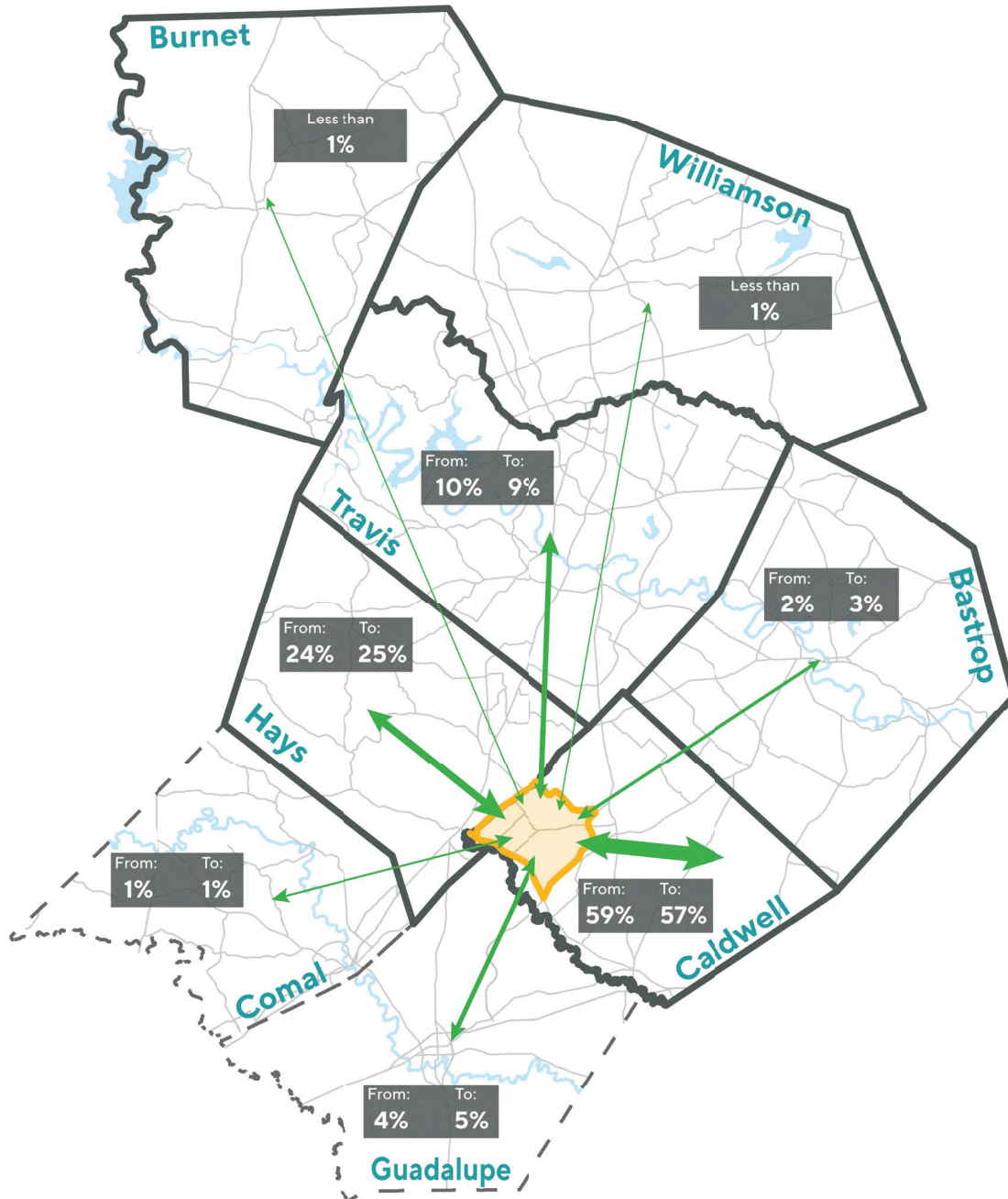


# STUDY TIMELINE



**NOTE:** Caldwell County will be responsible for moving forward with recommendations beyond step four including performing a detailed environmental study, gathering additional public input, constructing any recommendations, and securing funding for all additional steps.

# EXISTING TRAVEL PATTERNS



#### Travel Data Source:

AirSage's Nationwide Trip Matrix (NWTM)  
October - November 2019, Monday - Thursday,  
Peak Trip Patterns from Study Area (6-9 am & 3:30-6:30 pm)

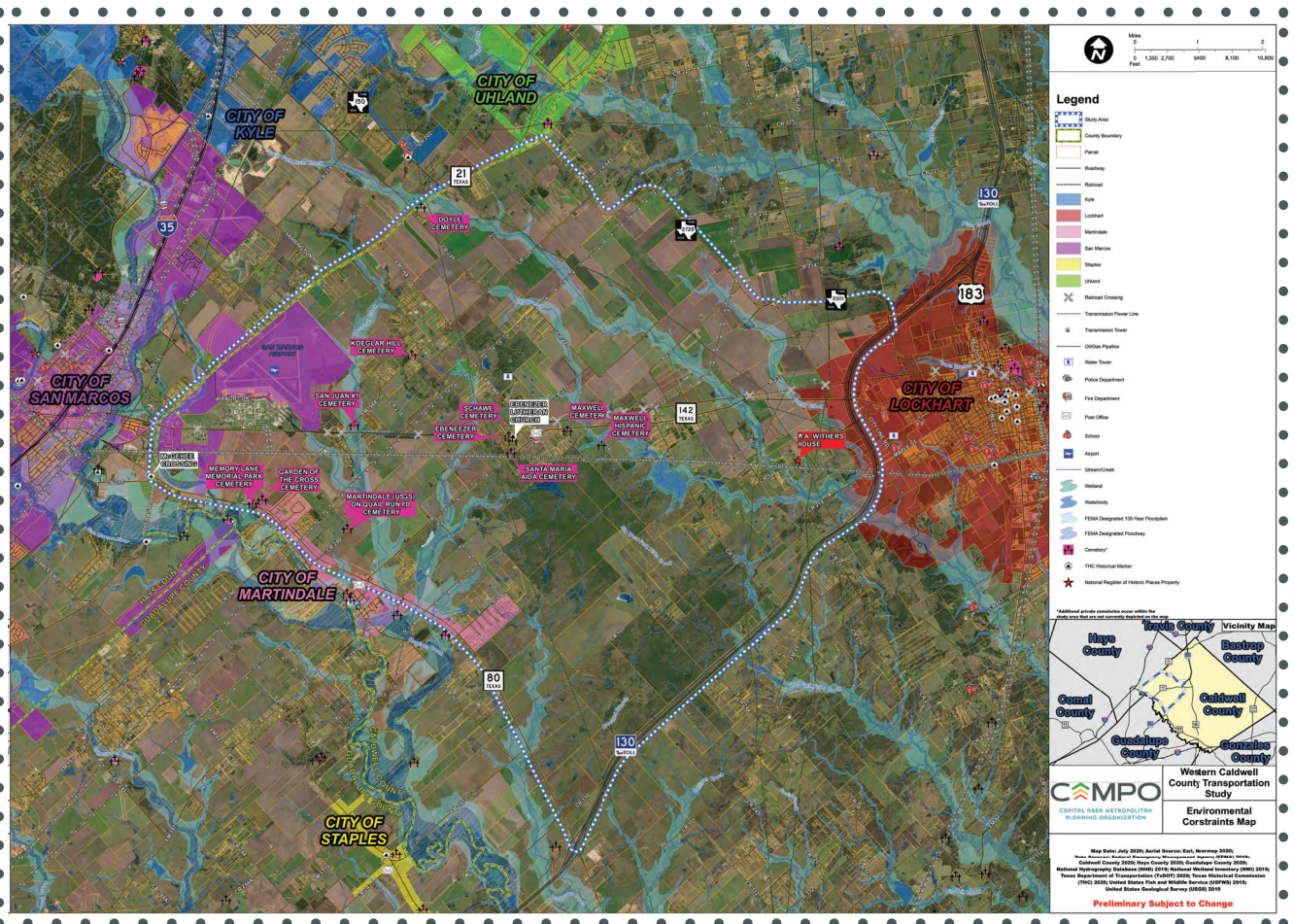
\*Percentages represent travel to/from the study area to eight surrounding counties.



## STUDY AREA MAP

**Click on the map and follow the prompts to provide comments on specific locations within the study area.**

**Interactive map not supported in Internet Explorer.**





## HOW TO COMMENT

**REVIEW** MATERIALS

**ASK** QUESTIONS

**SHARE** YOUR THOUGHTS



Leave comments on  
an **interactive map**



Email comments to  
**comments@campotexas.org**



Complete a **survey**



Mail comments to  
**Attn: WCCTS**  
**PO Box 5459**  
**Austin, TX 78763**

ALL COMMENTS MUST BE SUBMITTED BY  
**FRIDAY, OCTOBER 30, 2020**





