

# Northeast Burnet County Transportation Study

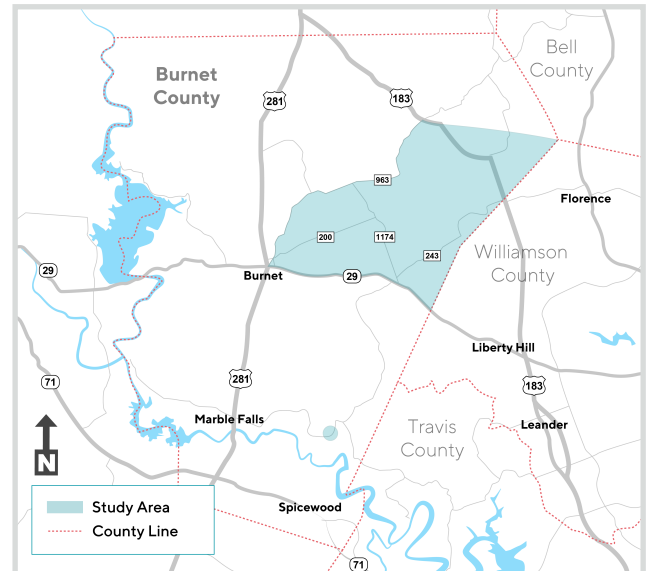


## OVERVIEW

The Capital Area Metropolitan Planning Organization (CAMPO) and Burnet County are working together to identify transportation needs and recommendations for improvements in Northeast Burnet County. The Study will include the evaluation of improvements along existing roadways.

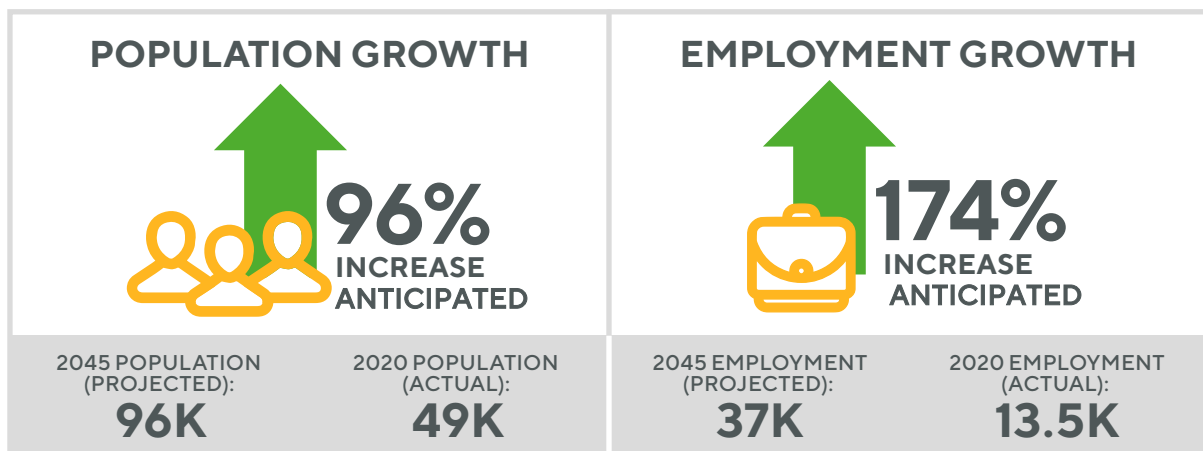
## WHY THE STUDY IS NEEDED

Burnet County and the six-county CAMPO region are experiencing significant growth and this growth is anticipated to continue. This Study is being conducted now to plan for future transportation needs as population and employment in the region increase.



Northeast Burnet County Transportation Study Area

## Burnet County

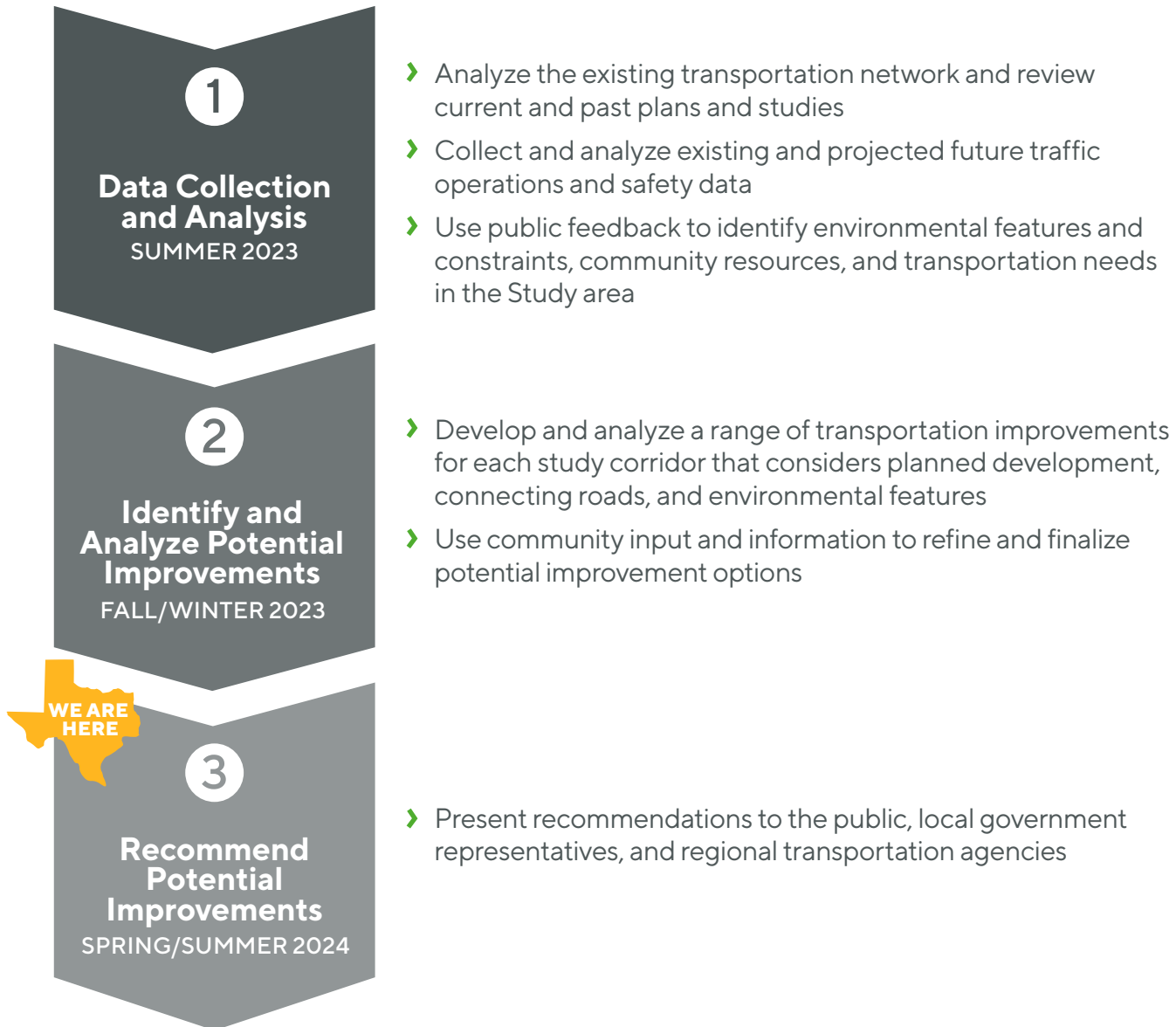


Burnet County Growth

## WHAT THE STUDY WILL ACCOMPLISH

The Northeast Burnet County Transportation Study will evaluate current and future roadway conditions, anticipated development, environmental constraints, and use public feedback to identify recommendations for transportation improvements in the area. The County could then use these recommendations to complete additional environmental analysis and schematic and detailed design for potential projects.

## PROCESS & TIMELINE



**NOTE:** Burnet County will be responsible for moving forward with recommendations, including securing funding for additional steps, performing detailed environmental studies, gathering additional public input, and constructing any recommendations.



Scan now to  
visit the project  
webpage

## »» GET INVOLVED

Visit the project webpage to learn more and sign up for updates:  
[campotexas.org/local-plans-and-studies/northeast-burnet-county-transportation-study](https://campotexas.org/local-plans-and-studies/northeast-burnet-county-transportation-study)

## CONTACT

Doise Miers, CAMPO



737-226-4840



[doise.miers@campotexas.org](mailto:doise.miers@campotexas.org)

Contact the study team to learn more and request a speaker for community meetings.