

Performance Measure Report

2025



Background

To provide more transparency in the selection and prioritization of surface transportation projects, federal legislation requires a performance-based planning process framework in the development of the Transportation Improvement Program (TIP) and Regional Transportation Plan (RTP) including the adoption of performance measure targets.

The U.S. Department of Transportation (USDOT) developed performance measures in seven key goal areas identified in federal transportation legislation. State departments of transportation and metropolitan planning organizations must set performance measure targets in these key areas as part of a larger performance measure planning system that creates an outcome driven approach.

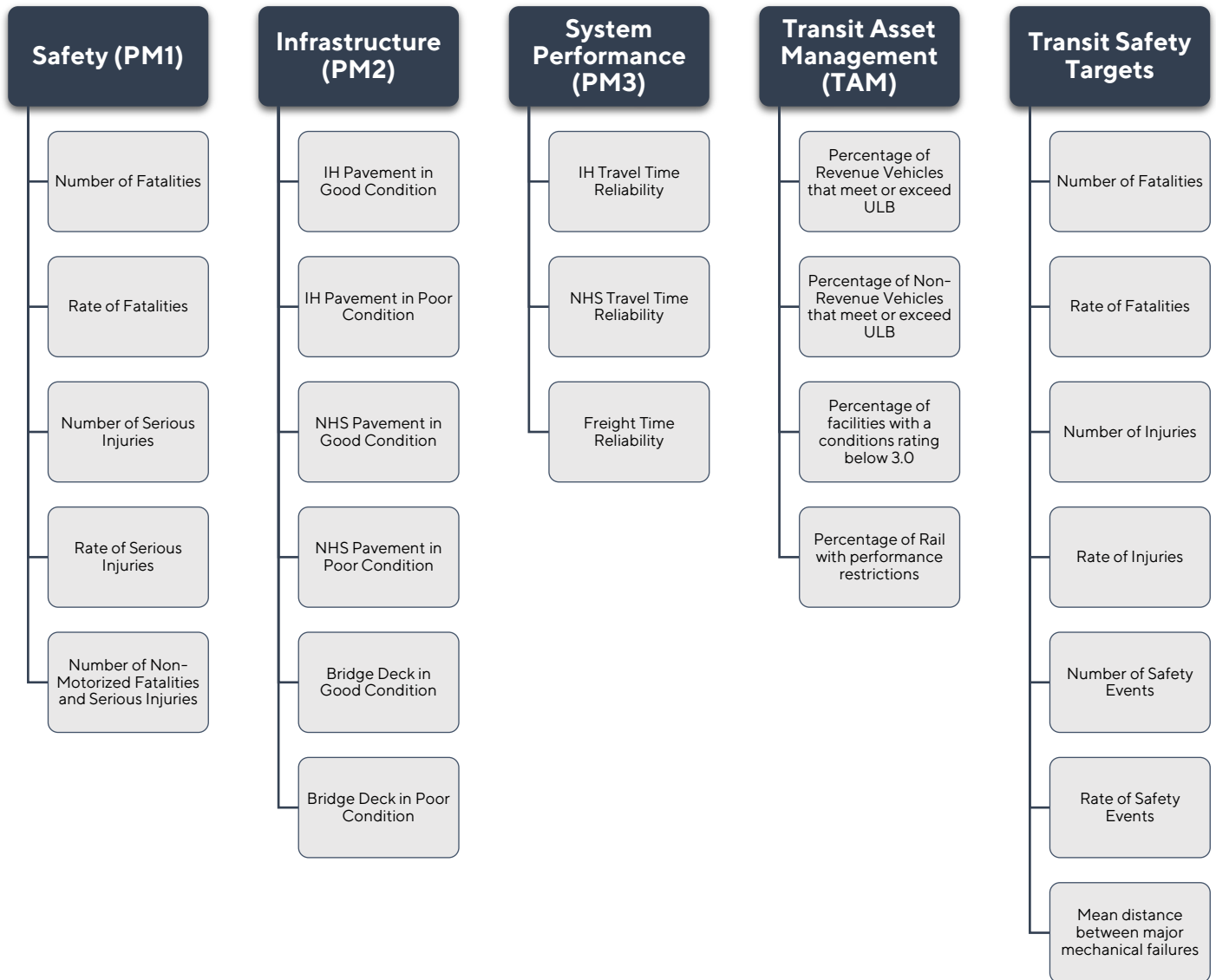


Transportation performance management is an iterative process that helps guide the planning process by providing directional goals for the plans and programs, but also provides a feed-back mechanism in which to measure success. To achieve the federal goals, states and MPOs jointly develop performance measures and targets with which to guide the transportation development process.

The Transportation Policy Board adopts the Performance Measure Report and updated performance measure targets on an annual basis. These targets are then incorporated into the programming and planning processes of the Transportation Improvement Program, Regional Transportation Plan, and other planning activities.

Summary

The use of a performance-based transportation planning process is required in the development of the Transportation Improvement Program (TIP) and Regional Transportation Plan (RTP). Part of the performance-based planning process requires the adoption of performance targets in key areas including Safety (PM1), Pavement and Bridge Conditions (PM2), System Performance and Freight Performance Measures (PM3) for on-system facilities as well as Transit Asset Management (TAM) and Transit Safety.



Safety Performance Measures (PM1)

The Transportation Policy Board currently supports the state’s efforts and has adopted the Safety targets set by the Texas Department of Transportation (TxDOT). The table below details the

statewide safety numbers which are supported by the priorities of the Transportation Policy Board and project investment. Targets are set annually, both at the state and local level, and are adjusted based on the previous year’s safety information and policy changes. Please refer to CAMPO’s [performance measure dashboards](#) for more information on regional performance.

Safety (PM1)	Current Target	2025 Target	5-Year Rolling Average Target
Number of Fatalities	3,046	3,046	3,567
Rate of Fatalities	1.14	1.14	1.14
Number of Serious Injuries	17,062	17,062	17,062
Rate of Serious Injuries	6.39	6.39	6.39
Number of Non-Motorized Fatalities and Serious Injuries	2,357	2,357	2,357

Please note, in addition to the calendar year targets, TxDOT sets a rolling 5-year target for each of the performance measures that is adjusted every year based on the actual safety data available from the previous year. These 5-year average targets represent the overarching safety goals set forth by the Texas Transportation Commission, namely a specific percentage reduction over the 5-year period. The new calendar year targets are calculated each year to support the rolling 5-year average targets. Because the calendar year targets are the actual targets needed for the current year to achieve the rolling 5-year average, the Transportation Policy Board adopts the calendar year targets.

Pavement and Bridge Conditions (PM2)

The Transportation Policy Board evaluates the general condition of the regional transportation system by establishing minimum condition standards and setting targets conditions for pavement and bridges. The Transportation Policy Board currently supports the state’s efforts and has

adopted the Pavement and Bridge Performance Measures (PM2) targets set by the Texas Department of Transportation. Please refer to CAMPO’s [performance measure dashboards](#) for more information on regional performance.

Infrastructure (PM2)	Current Target	Baseline	2-Year Target	4-Year Target
IH Pavement in Good Condition	66.5%	64.5%	63.9%	63.6%
IH Pavement in Poor Condition	.2%	.1%	.2%	.2%
NHS Pavement in Good Condition	54.1%	49.2%	48.5%	47.6%
NHS Pavement in Poor Condition	14.2%	1.1%	1.5%	1.5%
Bridge Deck in Good Condition	50.4%	49.2%	48.5%	47.6%
Bridge Deck in Poor Condition	1.5%	1.1%	1.5%	2.5%

Please note, in updating this year’s performance measure targets for PM2, the Texas Department of Transportation (TxDOT) has set 2 and 4-year targets for 2022 through 2025. These targets were set utilizing the most recent data available (baseline) regarding performance metrics.

System and Freight Performance (PM3)

The Transportation Policy Board has prioritized addressing congestion in the region by establishing system performance measures and setting targets for travel time reliability. The Transportation Policy Board currently supports the state’s efforts and adopted the System and Freight Performance targets set by the Texas Department of Transportation. Please refer to

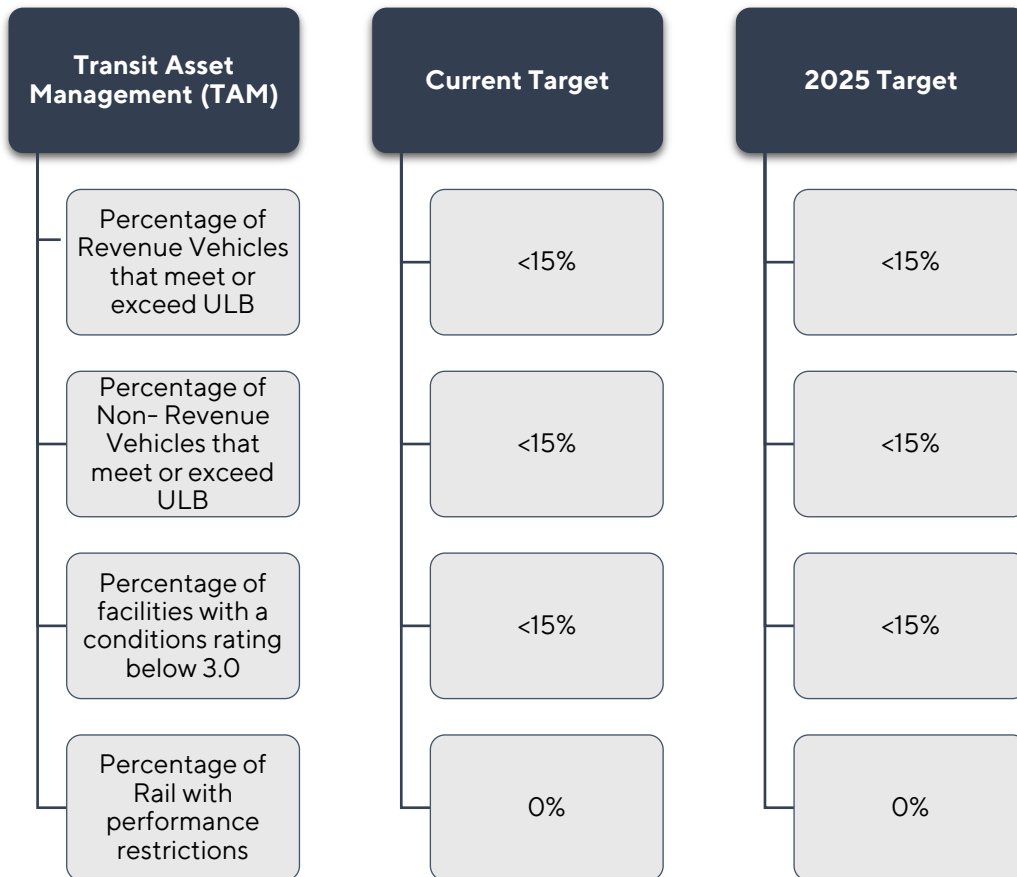
CAMPO's [performance measure dashboards](#) for more information on regional performance.

System Performance (PM3)	Current Target	Baseline	2-Year Target	4-Year Target
IH Travel Time Reliability	70.0%	84.6%	70%	70%
NHS Travel Time Reliability	70.0%	90.3%	70%	70%
Freight Time Reliability	1.76%	1.39	1.55	1.55

Please note, in updating this year's performance measure targets for PM3, the Texas Department of Transportation (TxDOT) has set 2 and 4-year targets for 2022 through 2025. These targets were set utilizing the most recent data available (baseline) regarding performance metrics.

Transit Asset Management (TAM)

Direct recipients of federal funds from the Federal Transit Agency (FTA), must comply with the FAST Act by adopting Transit Asset Management (TAM) performance measures and targets. These direct recipients, including Capital Metro and the City of Round Rock, must develop a Transit Asset Management (TAM) Plan with performance measure goals related to capital assets. In addition to the plan, the transit agencies must set annual performance measure targets for asset classes that they manage.



Note that regional transit providers approach Transit Asset Management target setting differently; whereas some providers set specific targets for their asset classes, others set a more generalized range in their Transit Asset Management Plans. Because of this, CAMPO adopts an overall range that is inclusive of both the agency specific targets and set ranges across providers.

Transit Safety Targets

Direct recipients of 5307 federal funding from the Federal Transit Agency (FTA), must comply with the federal regulations by adopting a Public Transportation Agency Safety Plan (PTASP) which includes transit safety targets that are adopted annually by the agency and the Transportation Policy Board. These direct recipients, including Capital Metro, the City of Round Rock and the City of San Marcos. Please note that rate targets are weighted averages between the providers, whereas specific number targets are the combined targets of the recipients.

Transit Safety Targets	Current Targets	2025 Targets
Number of Fatalities	0	0
Rate of Fatalities	0	0
Number of Injuries	65	65
Rate of Injuries	0.35	.35
Number of Safety Events	85	85
Rate of Safety Events	0.195	0.195
Mean distance between major mechanical failures	17,200	17,200

Performance Measure Resources

Transportation Performance Management (TPM) is a federally mandated strategic approach that uses system information to inform investment and policy decisions to achieve national performance goals. While target setting provides those critical benchmarks to measure success, it is the actionable investment decisions that directly impact the region. With that in mind, CAMPO has prioritized performance management in its investment strategies, planning activities, and has also developed digital tools to help provide real-time information and in-depth analysis regarding performance.

Transportation Performance Management Resources	
<u>Project Selection Criteria</u>	Project selection process that included a significant focus on the prioritization of projects that provide significant safety benefits, specifically in a project’s ability to directly reduce fatalities and serious injuries.
<u>Performance Measure Dashboards</u>	Comprehensive digital dashboards that provide the most up-to-date regional performance information. The dashboard provides users with the ability to do in-depth analyses on safety, performance, and pavement/bridge conditions
<u>Planning Activities</u>	<p>CAMPO’s planning activities from the Regional Transportation Plan and Transportation Improvement Program to the numerous regional and local studies include transportation performance management as an integral part of the planning process. Examples include:</p> <ul style="list-style-type: none"> • Regional Transportation Plan • Transportation Improvement Program • Regional Safety Plan • Regional Freight Study • Regional Bottlenecks/Interchange Study • Mobile Emission Reduction Plan • Local Studies

Appendix A – Federal Performance Measure Fact Sheets



Resolution 2025-4-9

Adoption of Performance Measure Targets and 2025 Performance Measure Report

WHEREAS, pursuant to federal law, the Governor of the State of Texas designated the Capital Area Metropolitan Planning Organization (CAMPO) as the Metropolitan Planning Organization for the Austin region in 1973; and

WHEREAS, CAMPO's Transportation Policy Board is the regional forum for cooperative decision-making regarding transportation issues in Bastrop, Burnet, Caldwell, Hays, Travis, and Williamson Counties in Central Texas; and

WHEREAS, use of a performance-based transportation planning process is required by the federal government in the development of the Transportation Improvement Program (TIP) and long-range Metropolitan Transportation Plan (MTP); and

WHEREAS, part of the performance-based planning process requires the adoption of performance targets in key areas by the effective date set by the FHWA's Final Rulemaking; and

WHEREAS, by these rulemakings, CAMPO must adopt performance measure targets for Safety (PM1), Pavement and Bridge Conditions (PM2), System Performance and Freight Performance Measures (PM3), Transit Asset Management (TAM) and Transit Safety Targets; and

WHEREAS, CAMPO has updated its performance measure targets in the required areas as part of the 2025 Performance Measure Report; and

NOW, THEREFORE BE IT RESOLVED that the CAMPO Transportation Policy Board hereby votes to adopt the updated performance measures targets as reflected in the 2025 Performance Measure Report; and

Hereby orders the recording of this resolution in the minutes of the Transportation Policy Board; and

BE IT FURTHER RESOLVED that the Board delegates the signing of necessary documents to the Board Chair.

The above resolution being read, a motion to adopt the updated performance measures targets as reflected in the 2025 Performance Measure Report as reflected was made on April 14, 2025 by Commissioner Cynthia Long duly seconded by Council Member Rudy Metayer.

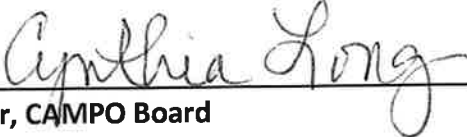
Ayes: Commissioner Cynthia Long, Council Member Rudy Metayer, Commissioner Clara Beckett, Mayor Christine DeLisle, Commissioner Joe Don Dockery, Mr. Tucker Ferguson, P.E., Mayor Pro Tem Vanessa Fuentes, Council Member Krista Laine, Mr. Matt Harriss, Commissioner Ann Howard (Proxy for Commissioner Jeffrey Travillion), Mayor Jane Hughson, Commissioner Debbie Ingalsbe, Ms. Amy Pattillo (Proxy for Judge Andy Brown), Mayor Jim Penniman-Morin, Council Member Zohaib Qadri, Mayor Josh Schroeder, Council Member Mike Siegel, and Commissioner Edward Theriot

Nays: None

Abstain: None

Absent and Not Voting: Mayor Travis Mitchell

SIGNED this 14th day of April 2025



Chair, CAMPO Board

Attest:



Executive Director, CAMPO